

Ideal Work&WashStation™ 7D

SPECIFICATIONS

THEGALLEY
REINVENT YOUR KITCHEN

IWW-7-D-BA



Natural Golden Bamboo / Exclusive Gray Resin

IWW-7-D-GT



Graphite Wood Composite / Graphite Resin

IWW-7-D-WH



Designer White Resin*

IWW-7-D-GR



Exclusive Gray Resin*

Specifications

Double bowl

Users: 1-3

Culinary/Wash Tools included: Twelve

Galley Taps recommended: Two

Outside dimensions: 81 1/2" x 19 1/2" x 10 5/16"

Countertop cutout: 80 1/2" x 18"

Basin area: 57 7/8", 21" 7/8" x 16"

Minimum cabinet size: 84" or 210cm

Basin (KSO-7-D-SS)

16GA 316L stainless steel indoor/outdoor

SilentArmor™ sound reduction technology

Angel finish

Two tier design

Star™ groove pattern

Reversible side drain

Drain covers included

Limited Lifetime Warranty

Made in the USA

ASME A112.19.3/CSA B45.4 certified

Culinary Tools included (CKT-17)



(1) Upper Deck
Section†
18" x 19"
UD-18-I-xx



(1) Dual Tier
Drying Rack
17" x 18"
DR-17-D-xx



(2) Dual Tier
Cutting Boards
17" x 18"
CB-17-D-xx



(2) Dual Tier
Platforms
17" x 18"
P2-17-D-xx



(2) Stainless Steel
Colanders
11" 7.2-qt
C1-11-0-ST



(2) Stainless Steel
Mixing Bowls
11" 7.2-qt
B1-11-0-ST

Wash Tools included (WKT-4T)



(1) Upper Tier
Drying Rack
9 1/4" x 18"
DR-09-U-xx



(1) Lower Tier
Wash Caddy
6" x 17"
WC-06-L-xx



(1) Lower Tier
Wash Bowl
12" x 17"
WB-12-L-xx



(1) Upper Tier
Utensil Caddy
6" x 18"
UC-06-U-xx

Personalize Your IWW-7-D

Add 7-12" length
Add 1-6" length
Add 18" DryDock
Add 12" DryDock

Apron front
9" height
Center drain

Galley Tap collection
Optional Culinary Tools
*Color coded labels available

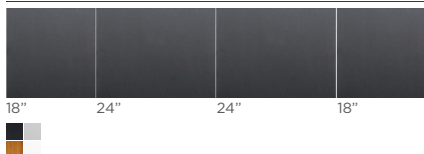
† The Upper Deck requires a 1/4" clearance below the surface of the countertop. If the countertop thickness is 2cm or less, Bamboo Upper Deck sections will not have the needed clearance to function above the Upper Tier Culinary Tools.

Please refer to Culinary Kit Finish descriptions for planning.

Custom options are available for countertops that are 1/2" or less in thickness.

Upper Deck™

Upper Deck cover set UD-7-4P-GT/BA/GR/WH Graphite, Bamboo, Gray or White Resin



18" 24" 24" 18"

(1) 18"

Included in CKT

Upper Deck sections Graphite, Bamboo, Gray or White Resin



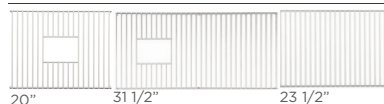
UD-24-I-GT/BA/GR/WH

UD-18-I-GT/BA/GR/WH

UD-12-I-GT/BA/GR/WH

Recommended Basin Accessories

Bottom Grate set BG-7-D-3-SS Stainless Steel



20" 31 1/2" 23 1/2"

Manual Strainer Basket

M-DRN-MSS Angel Finish 304 Stainless Steel



Disposal Flange Strainer Basket

G-DRN-MSS Angel Finish 304 Stainless Steel



Auto Strainer Basket

Angel Finish 304 Stainless Steel with Polished or Matte knob



A-DRN-MSS shown

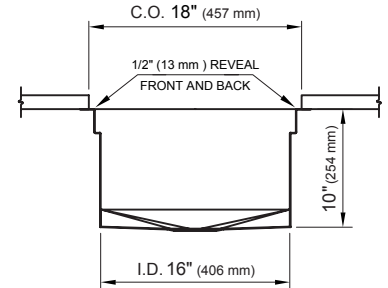
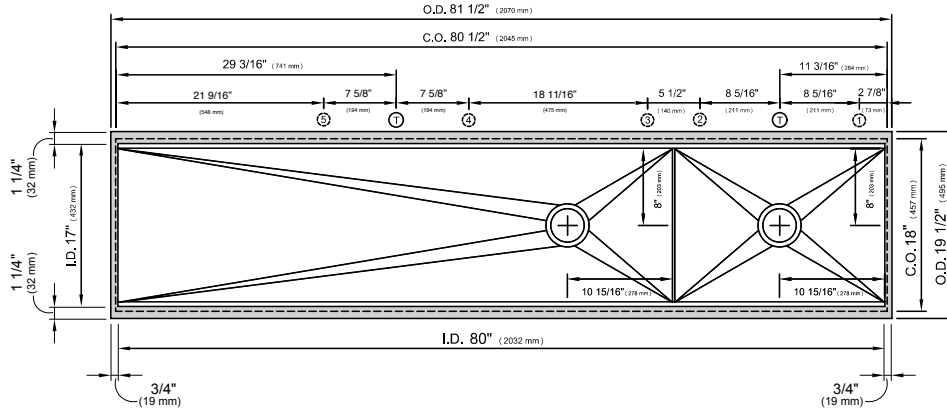
A-DRN-PSS
A-DRN-MSS

Ideal Work&WashStation™ 7D

SPECIFICATIONS

THEGALLEY
REINVENT YOUR KITCHEN

Tap Hole Specifications



SUGGESTED GALLEY TAP AND TAP ACCESSORIES PLACEMENT GUIDE

(Recommendations are based on installing 3 or more Tap accessories)

Suggested maximum inside corner radius of countertop cutout 3/8"

① Galley Tap 1 3/8" min hole diameter (1 1/2" min hole diameter for fast water jet cut)

② Galley Soap Dispenser 1" min to 1 3/8" max hole diameter

③ Galley Deck Switch 1 3/8" min hole diameter or Galley Automatic Strainer Basket knob 1" min and 1 3/8" max hole diameter

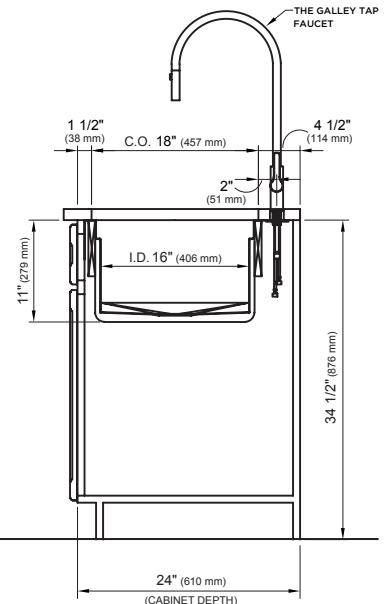
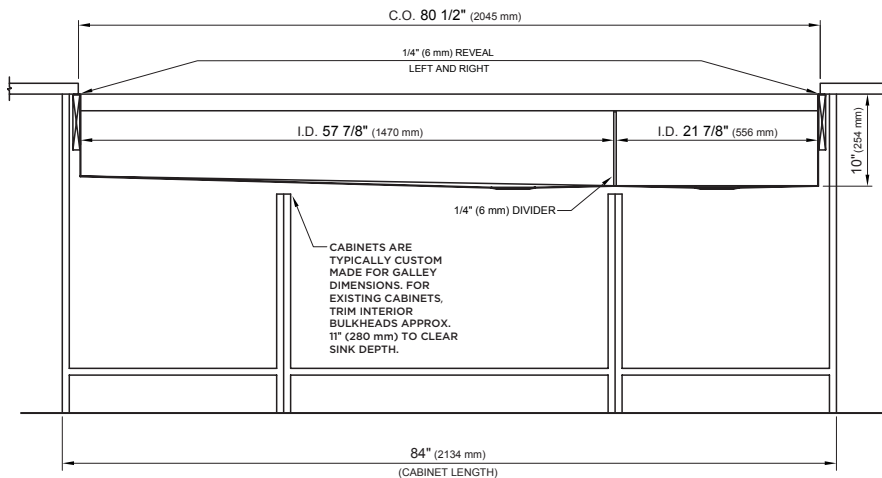
④ Galley Hot & Cold Tap 1 3/8" min hole diameter (1 1/2" min hole diameter for fast water jet cut)

Center Tap hole diameters 2" behind cutout

Note: Galley Hot & Cold Tap requires a minimum 8" clearance to center if installed to the right of the Galley Tap

Note: For installation where the drain is on the left side, simply reverse placements of Tap and Tap Accessories

Countertop Cutout Plan



STAINLESS STEEL COMPLIANCE ASME A112. 19.3-2008/CSA B45.4-08

WE RESERVE THE RIGHT TO MAKE REVISIONS WITHOUT NOTICE IN THE DESIGN OF PRODUCTS OR IN PACKAGING UNLESS THIS RIGHT HAS SPECIFICALLY BEEN WAIVED AT THE TIME THE ORDER IS ACCEPTED.

DWG and DXF templates available on our website:

TheGalley.com/specifications

Questions? For additional assistance, please contact
The Galley's Customer Service Department at 800.375.4255