

# Ideal Workstation. 4X3C

## SPECIFICATIONS

**THEGALLEY**  
REINVENT YOUR KITCHEN

### IWS-4X3-C-BA



Natural Golden Bamboo

### IWS-4X3-C-GT



Graphite Wood Composite

### IWS-4X3-C-GR



Exclusive Gray Resin\*

### IWS-4X3-C-WH


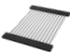






Designer White Resin\*

## Specifications

Single bowl  
Users: 2 (Outside Corner), 1 (Inside Corner)  
Culinary Tools included: Five  
Galley Tap recommended: One  
Outside dimensions: 44" x 32" x 19 1/2" x 10 5/16"  
Countertop cutout: 42 3/4" x 30 3/4" x 18"  
Basin area: 42" x 30" x 16"  
Min. cabinet size: 48" x 36" or 120cm x 90cm

## Culinary Tools included (CKT-12)

					
(1) Upper Deck Section† 12" x 19" UD-12-I-xx	(1) Upper Tier Drying Rack 12 1/4" x 18" DR-12-U-xx	(1) Upper Tier Cutting Board 12 1/4" x 18" CB-12-U-xx	(2) Lower Tier Platforms 12 1/4" x 17" P1-12-L-xx	(1) Stainless Steel Colander 11" 7.2-qt C1-11-0-ST	(1) Stainless Steel Mixing Bowl 11" 7.2-qt B1-11-0-ST

## Basin (KSO-4X3-C-SS)

16GA 316L stainless steel indoor/outdoor  
SilentArmor™ sound reduction technology  
Angel finish  
Two tier design  
Star™ groove pattern  
Side drain  
Drain cover included  
Limited Lifetime Warranty  
Made in the USA  
ASME A112.19.3/CSA B45.4 certified

### Personalize Your IWS-4X3-C

Add 7-12" length Add 1-6" length Add 18" DryDock	Add 12" DryDock 9" height	Galley Tap collection Optional Culinary Tools *Color coded labels available
--	------------------------------	---

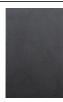
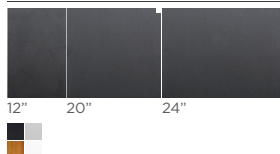
† The Upper Deck requires a 1/4" clearance below the surface of the countertop. If the countertop thickness is 2cm or less, Bamboo Upper Deck sections will not have the needed clearance to function above the Upper Tier Culinary Tools.

Please refer to Culinary Kit Finish descriptions for planning.

Custom options are available for countertops that are 1/2" or less in thickness.

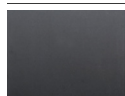
## Upper Deck™

Upper Deck cover set **UD-4X3-3P-GT/BA/GR/WH** Graphite, Bamboo, Gray or White Resin



(1) 12"  
Included in CKT

Upper Deck sections Graphite, Bamboo, Gray or White Resin



UD-24-I-GT/BA/GR/WH



UD-20-C-I-GT/BA/GR/WH



UD-12-I-GT/BA/GR/WH

## Recommended Basin Accessories

Bottom Grate set **BG-4X3-C-2-SS** Stainless Steel



25 1/2"

29"

Manual Strainer Basket

**M-DRN-MSS** Angel Finish 304 Stainless Steel



Disposal Flange Strainer Basket

**G-DRN-MSS** Angel Finish 304 Stainless Steel



Auto Strainer Basket

Angel Finish 304 Stainless Steel with Polished or Matte knob



A-DRN-MSS shown

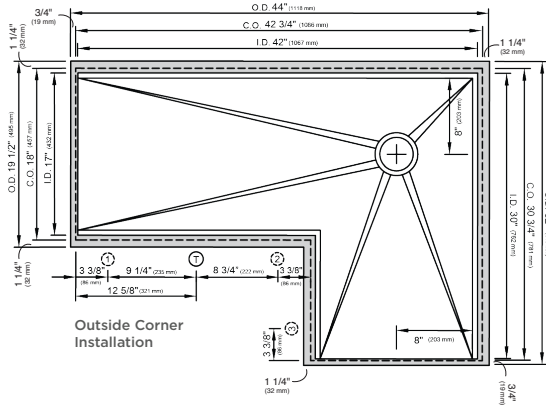
**A-DRN-PSS**  
**A-DRN-MSS**

# Ideal Workstation. 4X3C

## SPECIFICATIONS

**THEGALLEY**  
REINVENT YOUR KITCHEN

### Tap Hole Specifications



#### OUTSIDE CORNER INSTALLATION SUGGESTED GALLEY TAP AND TAP ACCESSORIES PLACEMENT GUIDE

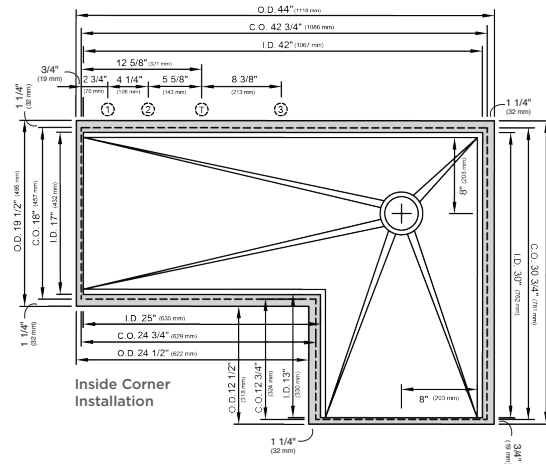
(Recommendations are based on installing 3 or more Tap accessories)

Suggested maximum inside corner radius of countertop cutout 3/8"

- Galley Tap 1 3/8" min hole diameter (1 1/2" min hole diameter for fast water jet cut)
- Galley Soap Dispenser 1" min to 1 3/8" max hole diameter
- Galley Deck Switch 1 3/8" min hole diameter or Galley Automatic Strainer Basket knob 1" min and 1 3/8" max hole diameter
- Galley Hot & Cold Tap 1 3/8" min hole diameter (1 1/2" min hole diameter for fast water jet cut)

Center Tap hole diameters 2" behind cutout

**Note:** Galley Hot & Cold Tap requires a minimum 8" clearance to center if installed to the right of the Galley Tap  
**Note:** For inner corner dimensions (O.D., C.O., I.D.) on Outside Corners, look to Inside Corner drawings



#### INSIDE CORNER INSTALLATION SUGGESTED GALLEY TAP AND TAP ACCESSORIES PLACEMENT GUIDE

(Recommendations are based on installing 3 or more Tap accessories)

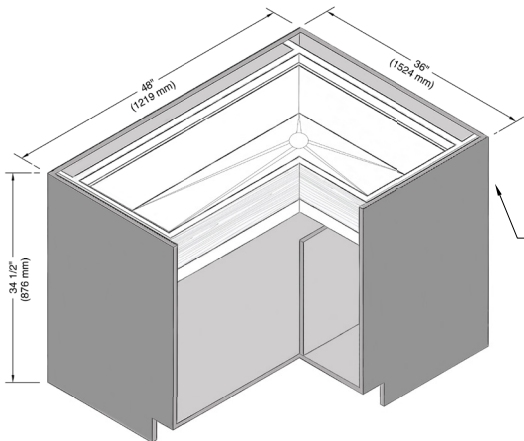
Suggested maximum inside corner radius of countertop cutout 3/8"

- Galley Tap 1 3/8" min hole diameter (1 1/2" min hole diameter for fast water jet cut)
- Galley Deck Switch 1 3/8" min hole diameter or Galley Automatic Strainer Basket knob 1" min and 1 3/8" max hole diameter
- Galley Soap Dispenser 1" min to 1 3/8" max hole diameter
- Galley Hot & Cold Tap 1 3/8" min hole diameter (1 1/2" min hole diameter for fast water jet cut)

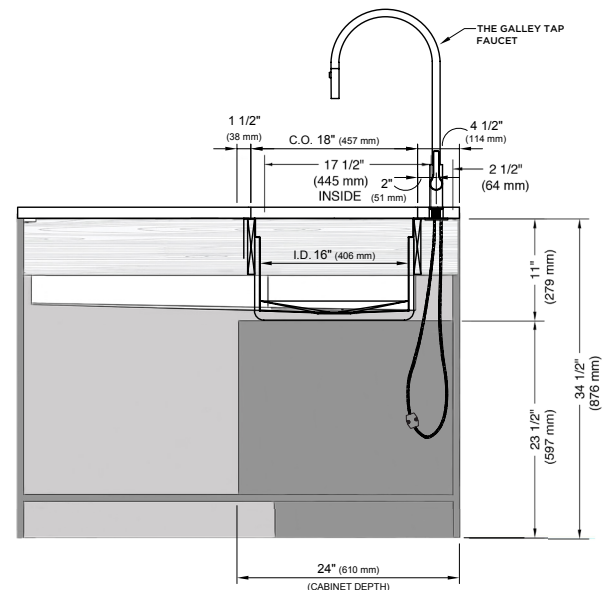
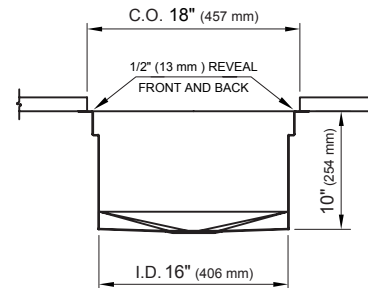
Center Tap hole diameters 2" behind cutout

**Note:** Galley Hot & Cold Tap requires a minimum 8" clearance to center if installed to the right of the Galley Tap

### Countertop Cutout Plan



CABINETS ARE TYPICALLY CUSTOM MADE FOR GALLEY DIMENSIONS. FOR EXISTING CABINETS, TRIM INTERIOR BULKHEADS APPROX. 1" (25.4 mm) TO CLEAR SINK DEPTH.



STAINLESS STEEL COMPLIANCE ASME A112. 19.3-2008/CSA B45.4-08

WE RESERVE THE RIGHT TO MAKE REVISIONS WITHOUT NOTICE IN THE DESIGN OF PRODUCTS OR IN PACKAGING UNLESS THIS RIGHT HAS SPECIFICALLY BEEN WAIVED AT THE TIME THE ORDER IS ACCEPTED.

DWG and DXF templates available on our website:

[TheGalley.com/specifications](http://TheGalley.com/specifications)

Questions? For additional assistance, please contact  
The Galley's Customer Service Department at 800.375.4255