

Luxury comes home

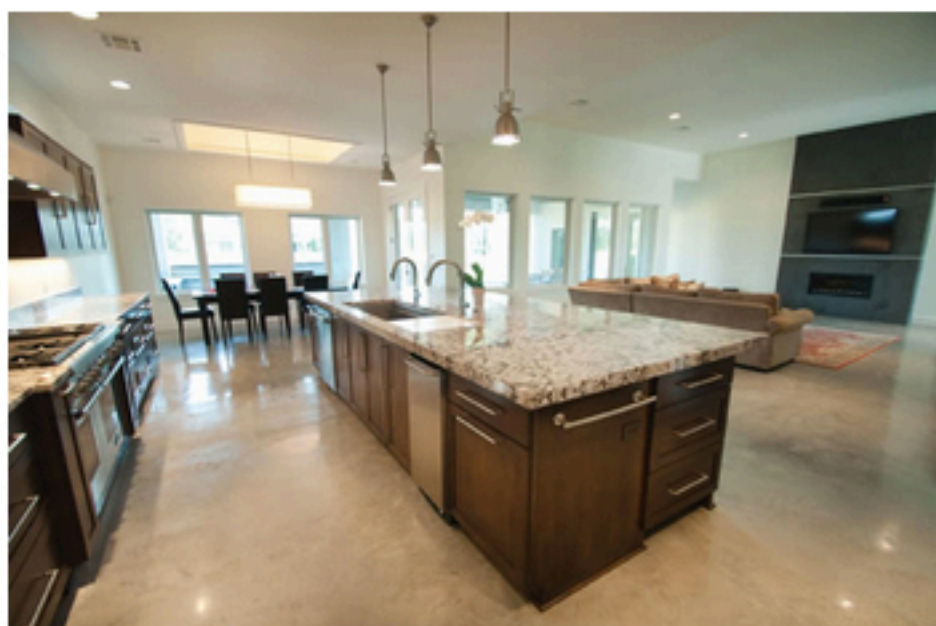
Local designers and architects have created these sublime kitchens and bathrooms — arguably the two most important rooms in a house.

ANNE BROCKMAN

Let there be light

Weldon Bowman, architect and owner of W Design, was inspired by Brazilian design when it came to creating the interior of a recent custom home.

“It’s all about light,” says Bowman of the Brazilian point of view, along with hard, clean surfaces, such as the concrete floors used throughout the home. It fit the bill for these homeowners, one of whom is a native of the South American country.



This custom home’s kitchen and dining and living areas were inspired by Brazilian culture.

Two bright spaces are the house’s kitchen and master bathroom, built by Cox & Perkins Homes. The 365-square-foot kitchen is part of the home’s great room, which includes a living room and dining nook. A wall of nearly floor-to-ceiling windows floods the 40-foot-long room with natural light.

Roger Shollmier of Kitchen Ideas served as consultant on the kitchen, which was equipped with maple cabinets by Quality Cabinetry stained to a dark espresso finish. The bianco antico granite used in the kitchen gives another nod to Brazil, where the granite was quarried.

The granite sits atop the expansive island featuring a side for casual dining with a Galley Sink, dishwasher and plenty of drawer storage on the opposite side. The kitchen was stocked with luxury appliances such as the striking Thermador gas range and the 66-inch side-by-side Electrolux refrigerator.

The kitchen is flanked by an expansive hidden pantry and an oversized eating nook. Bowman says that for many young, professional couples, a large formal dining room is unnecessary. Instead, the homeowners opted for the larger eating nook space that comfortably seats eight people.

Where Bowman didn’t scrimp on space is in the 208-square-foot master bathroom, complete with a steam shower and his-and-her sinks with column cabinets. The American Standard EverClean jetted spa has a unique alignment between the sinks.

“(The homeowners) were really concerned at first that, on paper, this was going to feel too tight,” Bowman says of the master bath. “Now, they love it because it gives him and her the separation they need.”

The steam shower’s dark gray tile and stainless steel accent band provide a masculine touch in the utilitarian space, while the same espresso-stained cabinets, Carrera marble countertops and radiant-heated concrete floors reflect light from the six clerestory windows encompassing the room.



The Thermador gas range is accented with pencil tile and a stainless vent hood.