

THE **GALLEY** DRESSER[®]



Installation Guide

Table of Contents

Commitment to Quality

Dresser Models Specifications

Dresser 7.....	1
Dresser 6.....	2
Dresser 5.....	3
Dresser 4.....	4

Delivery	5
-----------------------	----------

Before you Begin

Important Information.....	6
Delivery Contents.....	7

Pre-Installation

Cabinet.....	8
Plumbing & Mechanical.....	8

Installation

Dresser.....	9
Workstation.....	10
Countertop.....	11
Plumbing.....	11
Countertop Cutout & Tap Placements.....	12

Final Steps

Plumbing & Mechanical.....	14
Cabinet.....	14

Limited Lifetime Warranty	15
--	-----------

Commitment to Quality

Stylish design, handcrafted workmanship, unsurpassed functionality, and built to last a lifetime — this is The Galley.

The Galley has established a reputation for manufacturing high quality products for kitchens of today. From our carefully engineered double-tier basins, to each of our cleverly designed accessories, to our entire Galley Tap line, to our elegant and beautiful Galley Dresser, The Galley is the leader in the production of quality kitchen workstations. All Galley Workstations are developed, designed, engineered, and tested at the main production site and headquarters in Tulsa, Oklahoma and exported worldwide. The know-how of our highly skilled employees is the basis for long term quality-centered production. All Galley products share the same high quality standards and they adhere to strictest quality assurance measures and checks.

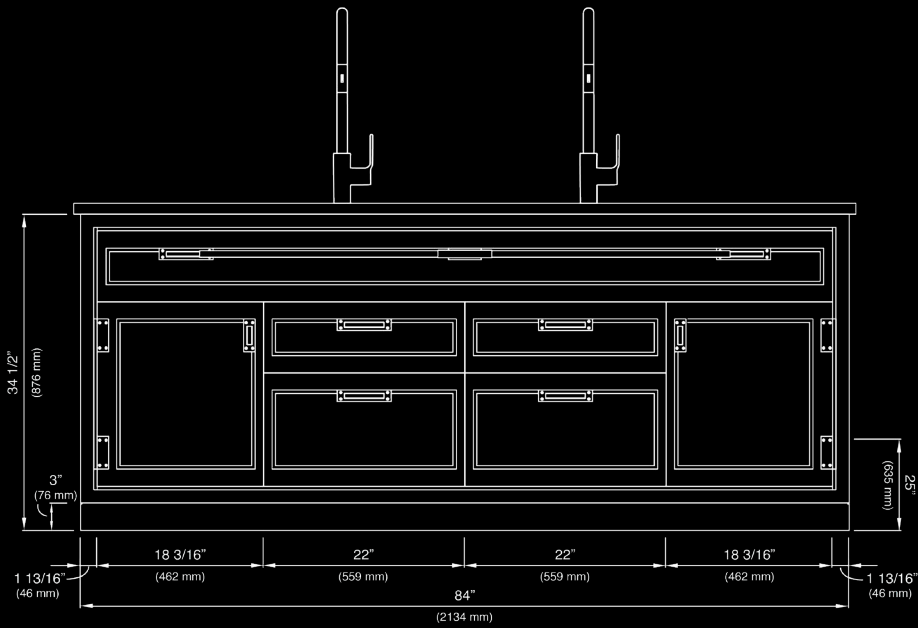
The greatest amount of time spent in the kitchen is at the basin, and that experience should no longer be an afterthought in the kitchen design process. The kitchen is the hub of the home, and now, The Galley Ideal Workstation is the hub of the kitchen. Not just a kitchen sink, it is fast becoming the most important appliance in the kitchen and is literally changing the way people plan for and use their kitchens. Galley owners everywhere tell us they would never have another kitchen without a Galley and they celebrate the way that it brings the one preparing the meal back into the conversation with family and friends.

With our commitment to quality, innovation, smart design, and unprecedented functionality, coupled with the consistently positive feedback we receive from our clients after the sale, The Galley Workstation should be considered by all who desire to have an active kitchen that is stylish, functional and fun.

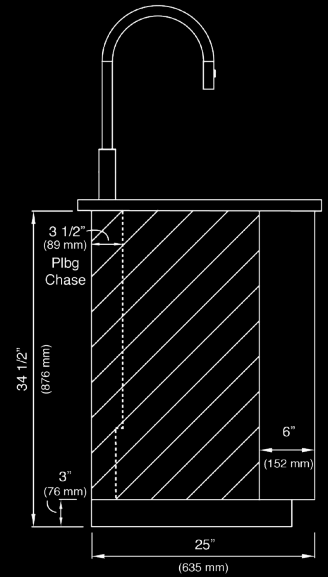
R. Scott Anderson
The Galley, LLC | CEO

Dresser 7

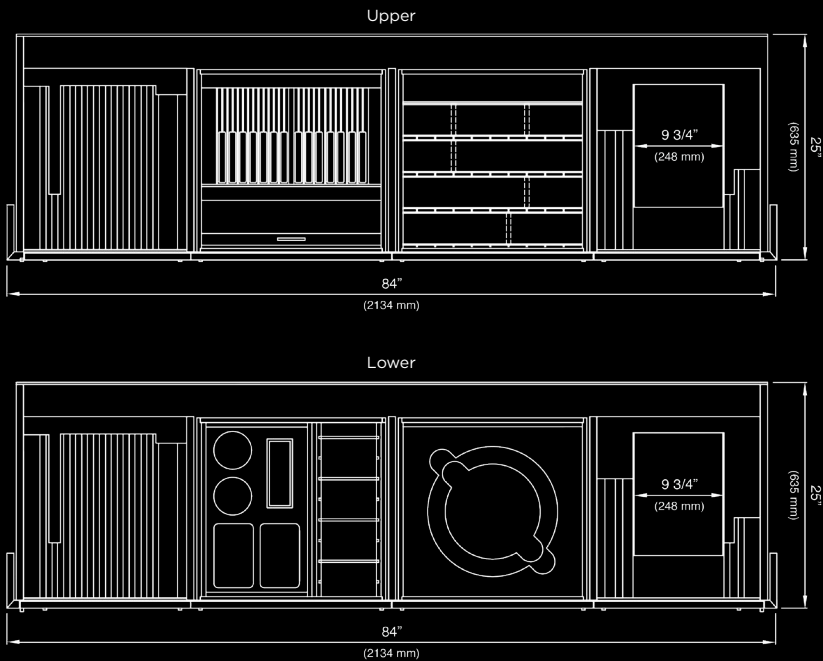
Front Exterior Elevation View



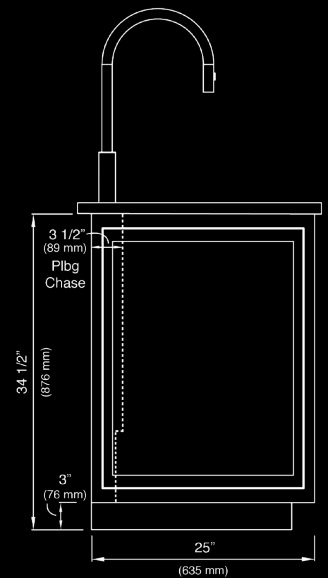
Standard Side Elevation View
6" Finished Sides



Interior Plan Views



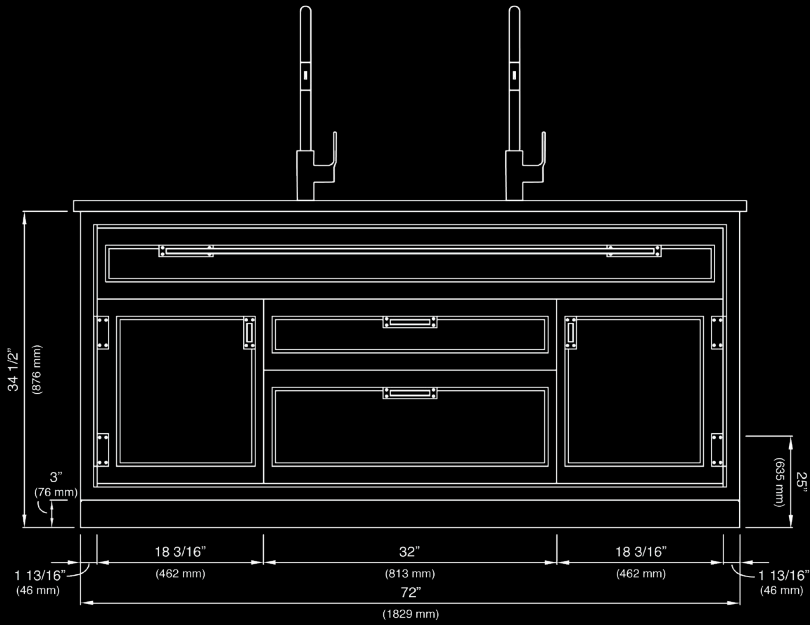
Custom Side Elevation View
Fully Finished Sides



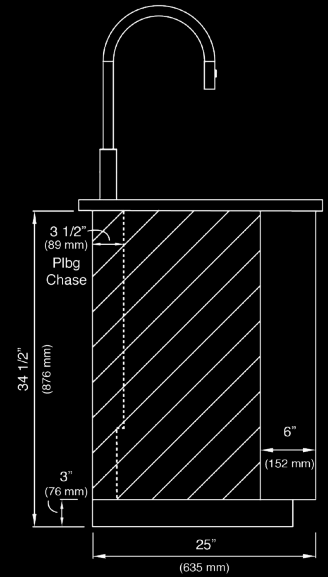
Note: The Galley Tap(s) sold separately

Dresser 6

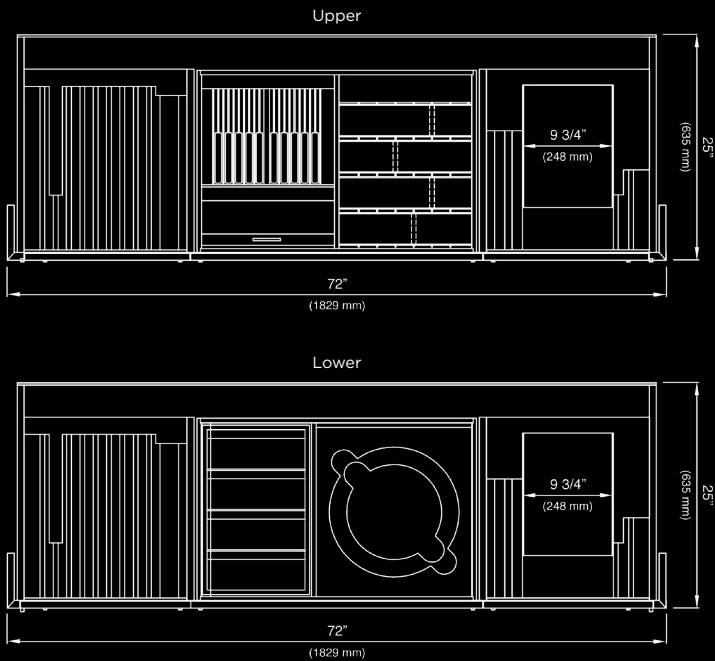
Front Exterior Elevation View



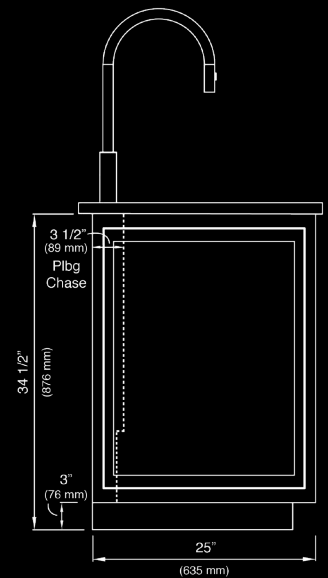
Standard Side Elevation View
6" Finished Sides



Interior Plan Views



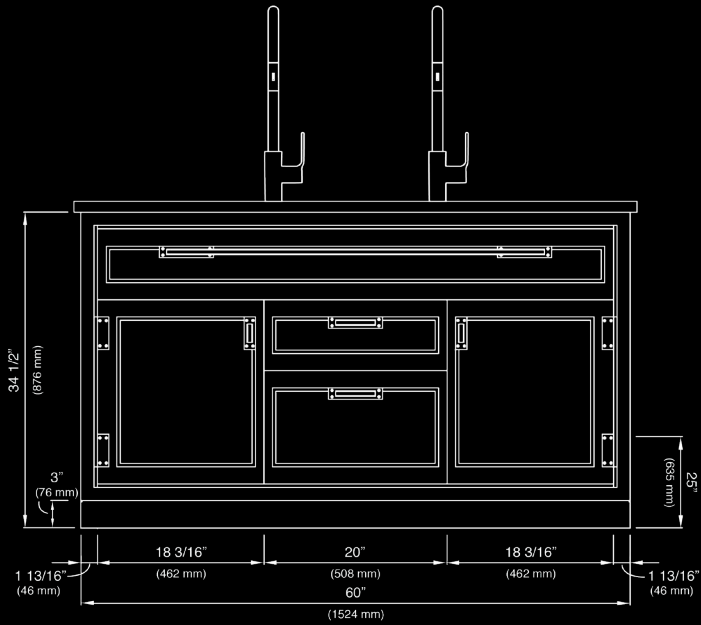
Custom Side Elevation View
Fully Finished Sides



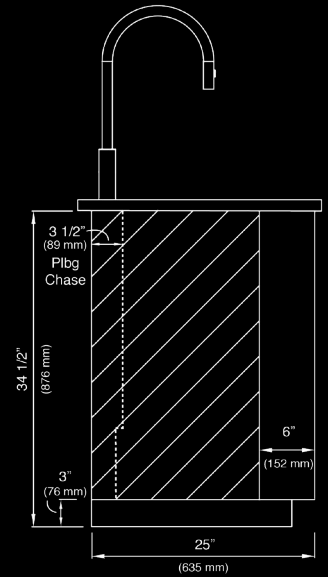
Note: The Galley Tap(s) sold separately

Dresser 5

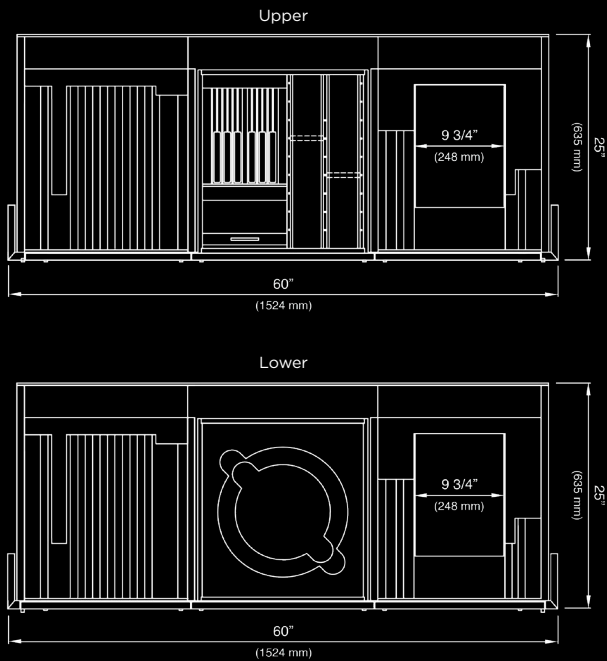
Front Exterior Elevation View



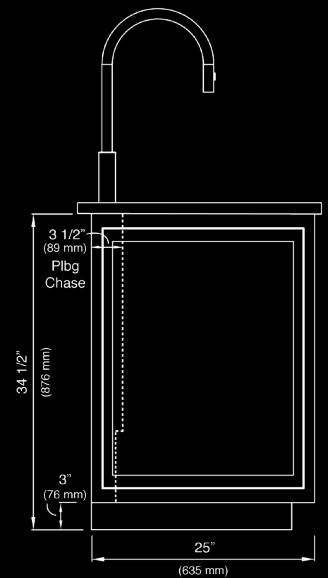
Standard Side Elevation View
6" Finished Sides



Interior Plan Views



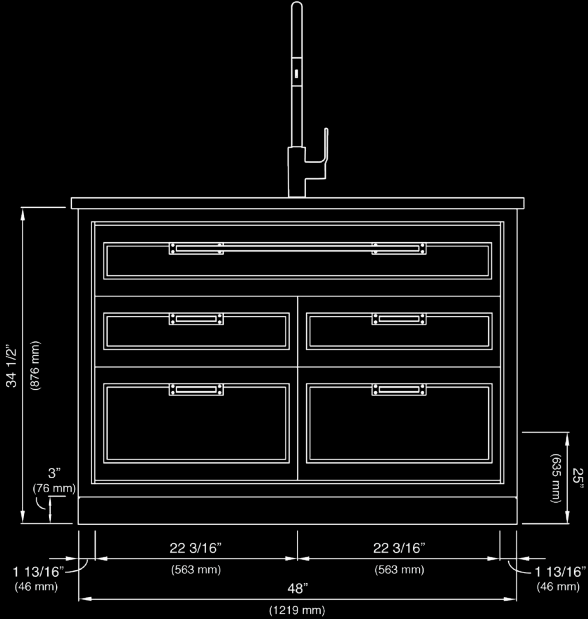
Custom Side Elevation View
Fully Finished Sides



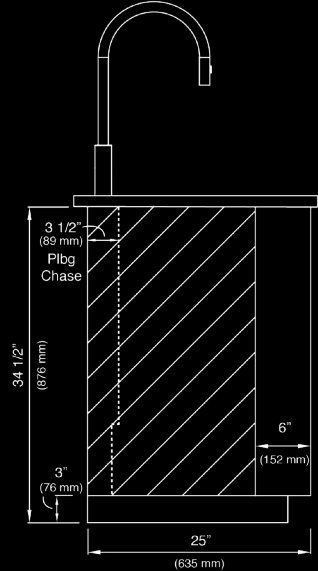
Note: The Galley Tap(s) sold separately

Dresser 4

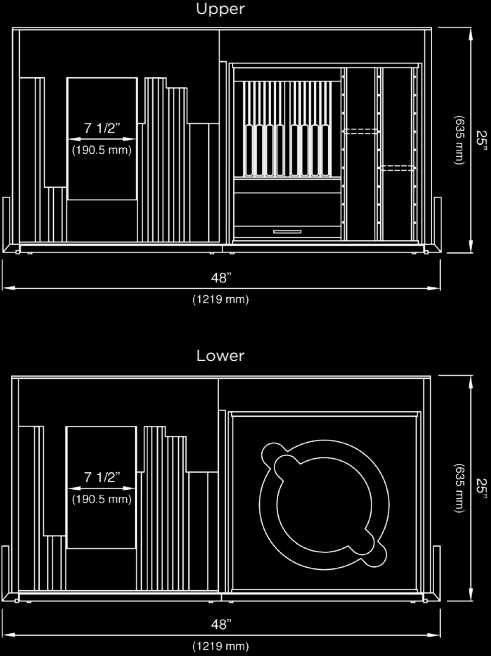
Front Exterior Elevation View



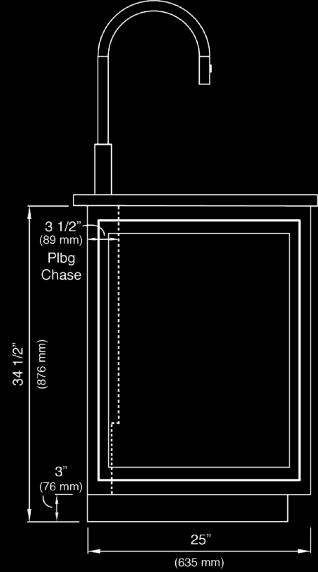
Standard Side Elevation View
 6" Finished Sides



Interior Plan Views



Custom Side Elevation View
 Fully Finished Sides



Note: The Galley Tap(s) sold separately

Delivery

Delivery

White Glove Service is standard for The Galley Dresser. This includes uncrating, setting The Dresser within 3 feet of its final placement, and removal of all packaging materials. The client may have elected to forego White Glove Service and opted for standard curbside delivery with special approval.

Damages

Great care has been taken to preserve the quality of The Dresser, and other Galley products, when crafted at the factory. In both delivery methods, it is very important that The Dresser is inspected for signs of damage upon delivery. If there is any damage caused by shipping, please note this with the carrier and contact Rachelle Caldwell immediately at 918.970.6672. Pictures of damage are very important and detailed notes on the White Glove delivery form should be made.

Before You Begin

IMPORTANT

Inspect The Galley Basin and Tap for any damage prior to installation. Please refer to all local plumbing and building codes prior to installation.

The Galley Workstation

- Please note: Unlike typical undermount kitchen sink installations, The Galley Workstation is installed in The Dresser prior to the counter being templated.
- Leave the installation instructions tray affixed to The Galley Basin until the countertop has been templated, and leave the basin braces affixed to the Basin's tiers until the countertop has been installed and silicone has cured for a minimum of one hour.

The Galley Tap

INSTALLATION WARNING: NEVER USE TEFLON TAPE FOR OUT-OF-THE-WALL THREADED CONNECTIONS. USE PROVIDED CONTENTS ONLY. NOT COMPLYING WITH THIS INSTRUCTION COULD DAMAGE THE PRODUCT AND GENERATE LEAKAGE.

- Turn off the water supply/supplies.
- Inspect water supplies for signs of damage. Replace if necessary.
- Ensure that the hot and cold supply hoses can fully reach the water supply stops. You may need to acquire extension hoses in the necessary length for proper installation.
- DO NOT use petroleum-based products on this faucet.

TOOLS NEEDED

Dresser



Wood Shims



Wood Screws



Circular Saw



Pencil



Screws

Workstation



Tape Measure



Level



2" Painters
Tape



100% Clear
Silicone



Cloth



Spray Bottle



Clamps
(Optional)

Tap



Phillips Screwdriver



Adjustable Wrench



Adjustable Pliers

Delivery Contents

Dressers 7, 6, 5

1. Dresser
2. Workstation Basin
3. Dresser Culinary Kit
 - One 18" Upper Deck Section
 - One Dual Tier Drying Rack
 - One Upper Tier Garnish Board
 - One Dual Tier Condiment Serving Board
 - Three Dual Tier Platforms
 - Two Colanders
 - Two Mixing Bowls with lids
 - One Wash Basin
 - One Large Serving Bowl
 - Two Dual Tier Cutting Boards
 - One Dual Tier 2" Chef's Block
 - Two Upper Tier Half Sheet Pans
 - One Upper Tier Utensil Caddy
 - One Upper Tier Condiment Serving Board
4. Basin Accessories
 - Bottom Grate Complete Set
 - Manual Strainer Basket
 - Disposer Flange with Strainer Basket
5. Plumbing Shroud
6. Toe Kick
7. Additional Hardware (if applicable)
8. Tap(s) and Tap Accessories (if applicable)
9. Additional Galley Products (if applicable)

Dresser 4

1. Dresser
2. Workstation Basin
3. Dresser Culinary Kit
 - One 12" Upper Deck Section
 - One Upper Tier Drying Rack
 - One Upper Tier Utensil Caddy
 - One Upper Tier Garnish Board
 - One Upper Tier Cutting Board
 - One Dual Tier Platform
 - One Wash Basin
 - One Large Serving Bowl
 - One Dual Tier Condiment Serving Board
 - Two Lower Tier Platforms
 - One Colander
 - One Mixing Bowl with lid
 - One Upper Tier 2" Chef's Block
 - One Upper Tier Half Sheet Pan
 - One Upper Tier Condiment Serving Board
4. Basin Accessories
 - Bottom Grate Complete Set
 - Manual Strainer Basket
 - Disposer Flange with Strainer Basket
5. Plumbing Shroud
6. Toe Kick
7. Additional Hardware (if applicable)
8. Tap(s) and Tap Accessories (if applicable)
9. Additional Galley Products (if applicable)

Pre-Installation

Cabinet Preparation

Important Notes:

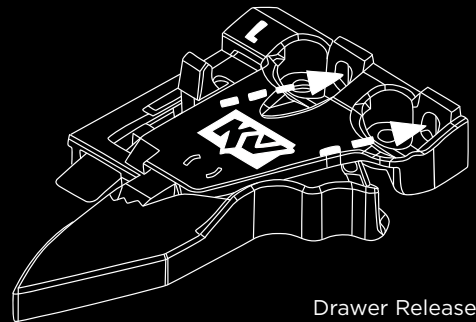
- **Protect The Dresser and the cabinetry.**
- **Use only licensed and/or certified contractors to install Galley products.**

Prior to installing The Dresser, confirm the space has been prepared according to the specifications. Ensure the installation site is clean and that there are no obstacles that can damage the Dresser prior to or during installation.

Once space has been prepared for installation, carefully remove all drawers, doors and the plumbing shroud. The plumbing shroud is held into place with magnets.

To remove the drawers, locate the levers release on the bottom of the drawers.

Tape all drawer glides into place upon removing any drawer or sliding unit to prevent damage to the glides. After installation is complete, you will remove the tape for proper slide operation.



Plumbing & Mechanical Preparation

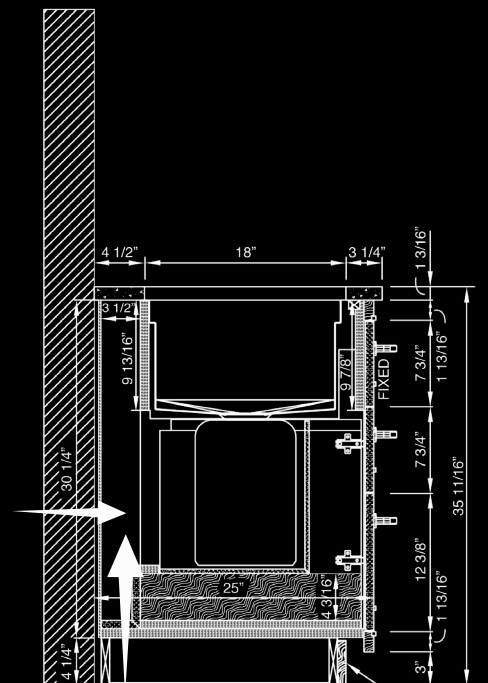
It is recommended to bring plumbing and mechanicals through the floor or wall when the Dresser is delivered if possible. The Dresser chase for the Tap hoses is 3 1/2" inches deep and runs the width of the Dresser.

Before installation, rough-in the plumbing and prepare for final hookups to be done after the countertop is installed. Cap and plug as necessary to prevent any water damage.

Create cutout for all plumbing and mechanical openings for electricity, supply water, and wastewater into the bottom or back of The Dresser as shown by arrows in the illustration. The location and size of the cutouts will vary depending on the plumbing fixtures being installed into The Dresser (Strainer Basket, Water Filtration System, etc.) or in adjoining cabinetry (Ideal Hot Water Tank).

Hot Supply Valve: 13" below countertop and 7" off-center right of Tap.

Cold Supply Valve: 13" below countertop and 7" off-center right of Tap.



Installation

Cabinet Installation

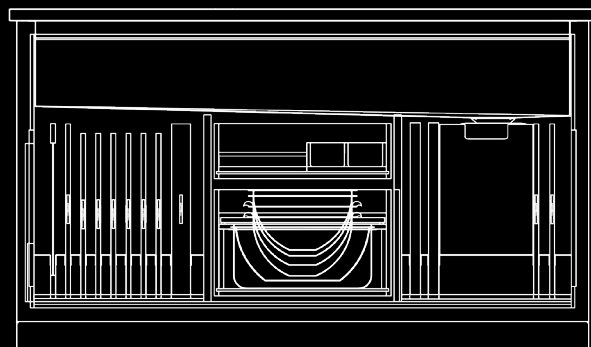
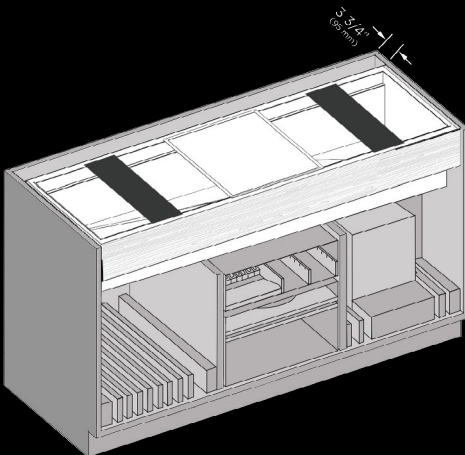
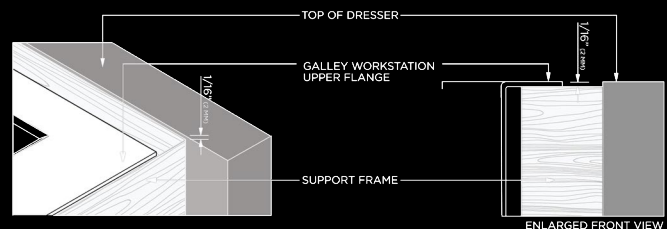
1. Install The Dresser with the platform into the final place and shim to a level position. Then attach to adjacent cabinetry and walls (if applicable) using industry standards.
2. Measure from the bottom of the face frame to the floor, then adjust the toe kick. Level, scribe, and screw on finished toe kick to Dresser platform.
3. Place a protective cover over all exposed surfaces that may be damaged during plumbing or counter installation.



Dresser Platform

Workstation Basin Installation

1. Carefully place The Galley Workstation Basin into The Dresser by resting the flanges on the support frame. All four flanges should rest on the support frame. Ensure the drain is positioned either left or right according to the location of the plumbing shroud. Keep the braces in place inside the Workstation until after the countertop has been installed.
2. Use a level to ensure that the flanges are level. The top of the flanges should be flush with the top of the cabinet.
3. Position the Basin so that it is perfectly square within the Dresser.
4. Protect any exposed surfaces from any damage using industry best practices.



Installation

Countertop Installation

Use the white template tray affixed to The Galley Basin flanges as your guide for the front to back, and left to right cutout. Refer to the Workstation specifications on pages 12-13 for your overall cutout dimensions or refer to the drawing on the template tray.

Note: The suggested maximum corner radius is $3/8$ ".

Please refer to countertop manufacturer's warranted minimums

The front to back cutout dimension must always be exactly 18".

The finished countertop will not completely cover the Basin flanges. A $1/2$ " will be exposed on the front and back flanges and a $1/4$ " exposed on the left and right flanges. Creating this reveal allows for the Tools to slide across the upper tier.

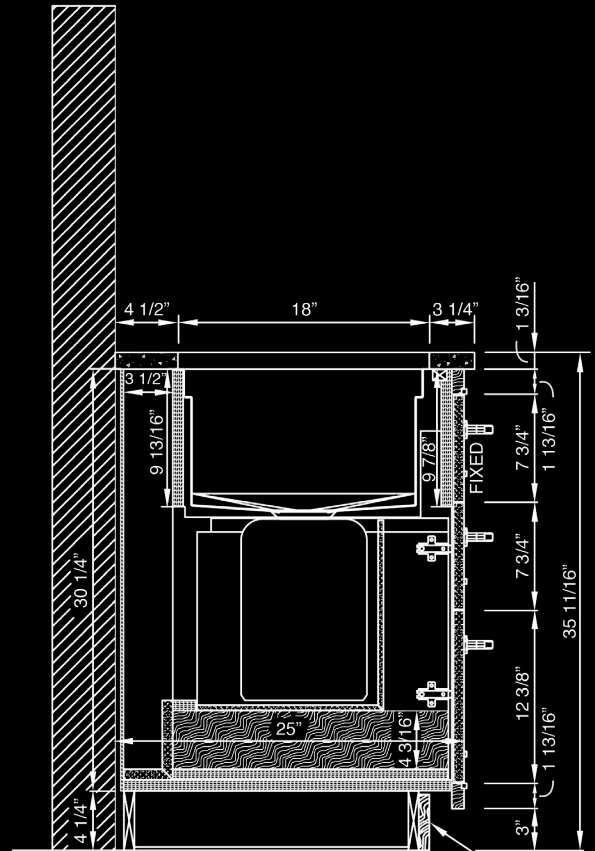
-
1. On the front and back flanges, measure exactly $1/2$ " from the inside of the Basin and mark with a pencil.
 2. On the left and right flanges, measure exactly $1/4$ " from the inside of the Basin and mark with a pencil. Now you are ready to tape the flanges with painters tape.
 3. Apply tape to the marked area, covering exactly $1/4$ " closest to the inside of the Basin. Ensure that the tape covers the entire length of the flanges and that it extends exactly $1/2$ " onto the front and back flanges. **IMPORTANT:** Be sure that it does not extend more than $1/2$ " onto the front and back flanges as shown.
 4. Apply tape to the marked area, covering exactly $1/2$ " closest to the inside of the Basin. Ensure that the tape covers the entire length of the flanges and that it extends exactly $1/4$ " onto the left and right flanges. **IMPORTANT:** Be sure that it does not extend more than $1/4$ " onto the left and right flanges as shown.
 5. Apply a heavy bead of silicone to the untaped part of the flange.
 6. Before setting the countertop in place, make sure the Basin is perfectly square in the cabinet. Set the countertop and position it properly so there is exactly $1/2$ " exposed reveal on the front and back flanges and exactly a $1/4$ " exposed reveal on the left and right flanges. Press countertop down on the flange. The silicone should fill any gaps.
 7. Once the countertop has been set and the reveals measured, remove the excess silicone that is on the taped flanges, (do not remove the tape in this step). Using a spray bottle and a cloth, carefully clean all excess silicone off of the exposed taped flange.
 8. Wait approximately one hour and remove tape and Basin braces. This will ensure there is a clean flange, free from silicone, which will enable the Tools to slide freely.

Installation

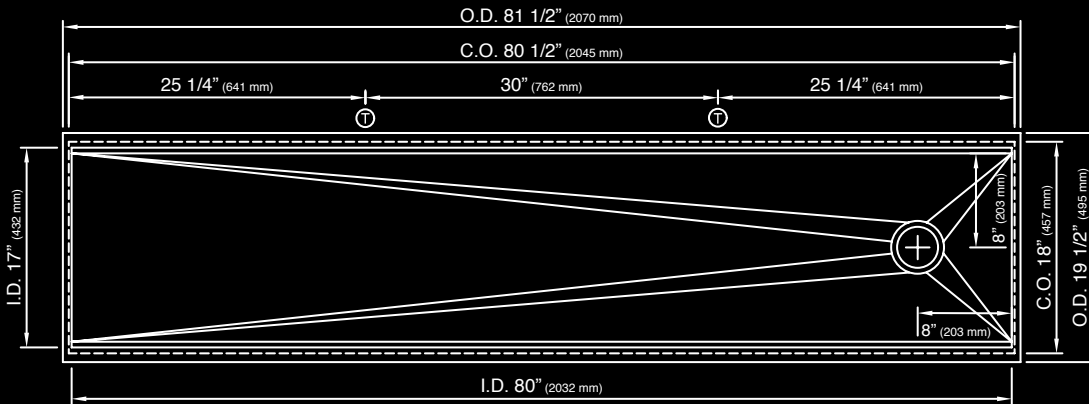
Plumbing or Tap Placements

Drill holes for the Tap(s) and any additional plumbing fixtures or Tap Accessories being used. Tap placements for all Dresser sizes shown on pages 12-13.

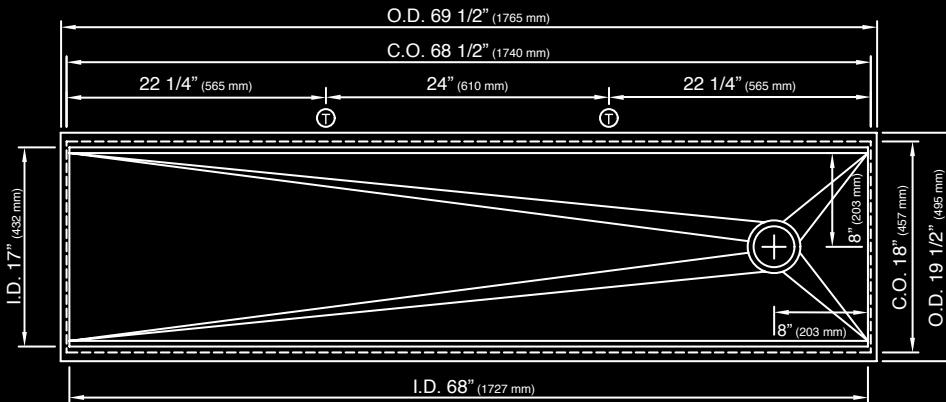
Refer to Tap and Tap Accessories Installation Guides located within each product box.



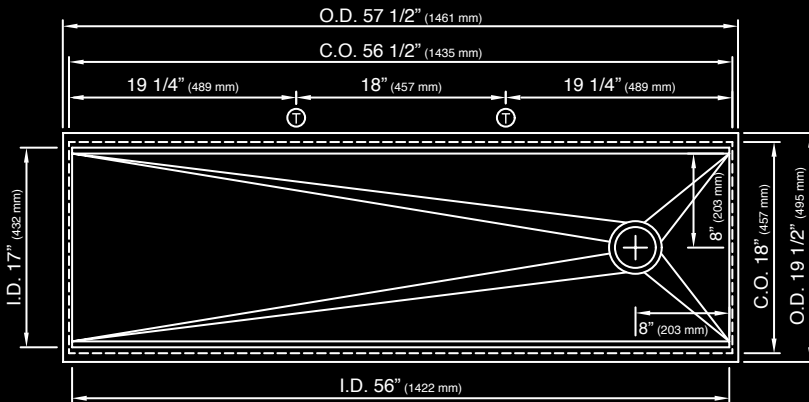
Countertop Cutout & Tap Placement Specifications



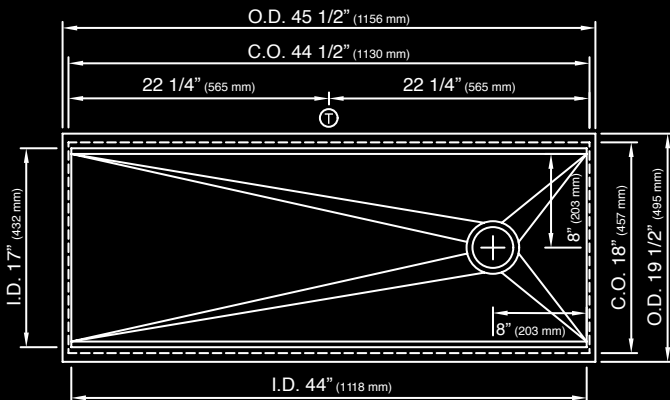
Dresser 7
Right Hand Drain
(DRS-7-RH)



Dresser 6
Right Hand Drain
(DRS-6-RH)



Dresser 5
Right Hand Drain
(DRS-5-RH)

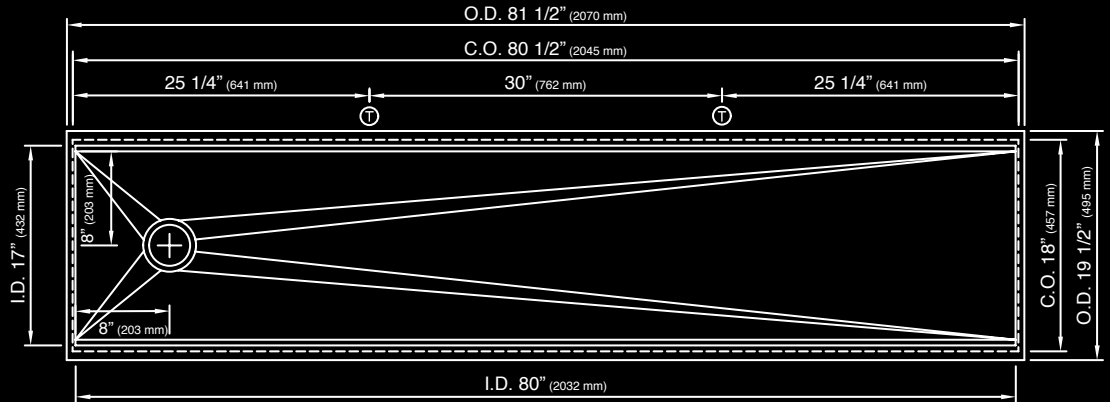


Dresser 4
Right Hand Drain
(DRS-4-RH)

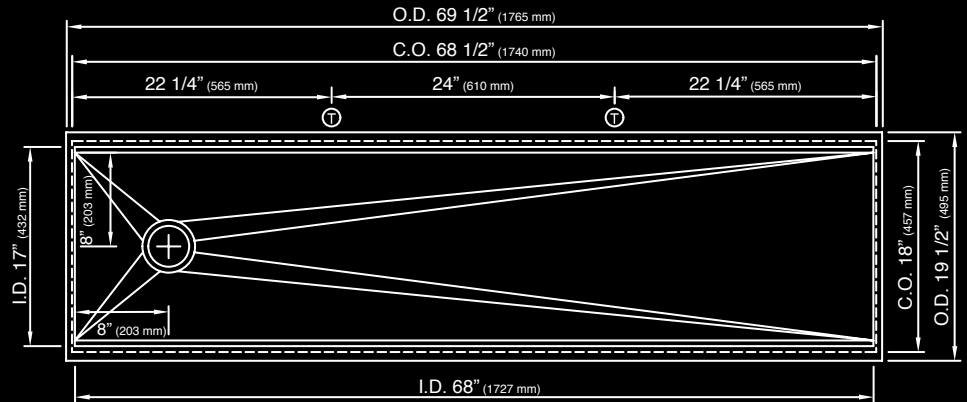
Call 800.375.4255 or email customerservice@thegalley.com for additional guidance on Tap and Tap Accessory placements

Countertop Cutout & Tap Placement Specifications

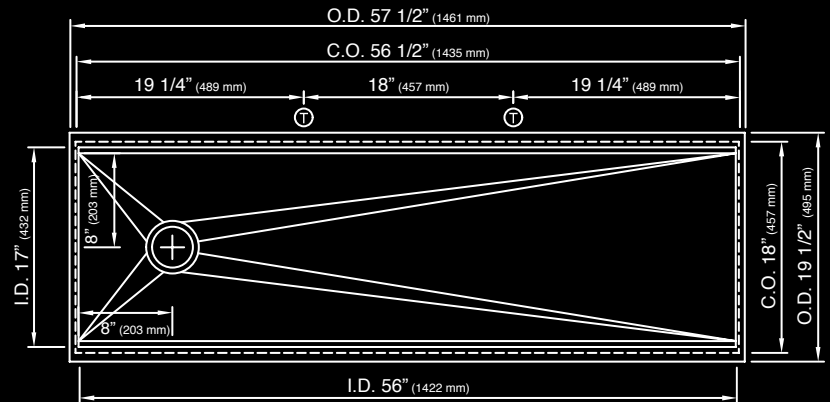
Dresser 7
Left Hand Drain
(DRS-7-LH)



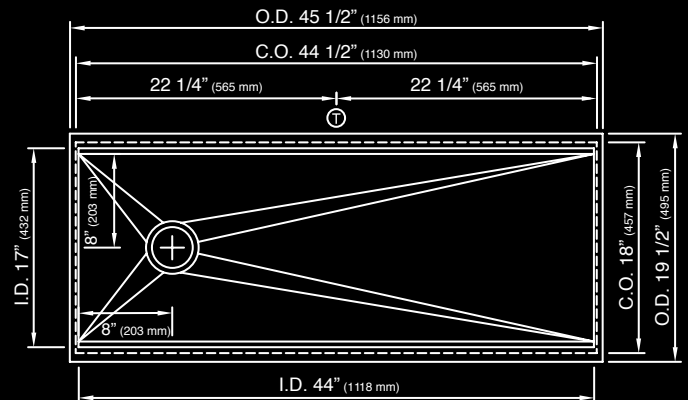
Dresser 6
Left Hand Drain
(DRS-6-LH)



Dresser 5
Left Hand Drain
(DRS-5-LH)



Dresser 4
Left Hand Drain
(DRS-4-LH)



Call 800.375.4255 or email customerservice@thegalley.com for additional guidance on Tap and Tap Accessory placements

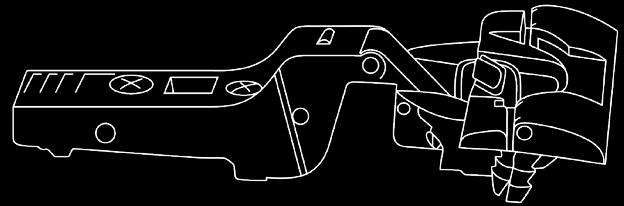
Final Steps

Plumbing & Mechanical

1. Complete plumbing and electrical connections inside The Dresser and any additional appliances that may be installed in The Dresser.
2. Test for any leaks and clean the work area using industry best practices.
3. At this point, the plumbing, electrical and countertops have been installed. Remove any protective materials and tape.

Cabinetry

1. Re-install the doors, alignment may be necessary. The supplied hinges are half overlay thick door soft-close hinges. See figure.
2. The hinges can be adjusted left to right, front to back, up and down. Ensure the door facings are level with each other, close correctly and the distance from the hinge surface to the surface of the door is symmetrical with the other doors.
3. Perform a final inspection for leaks, misalignments or any defects or damage.
4. Wipe down all surfaces using a soft, lint free cloth. Dampen with water if necessary.



Half Overlay Thick Door Soft-Close Hinge

Limited Lifetime Warranty

1. Galley Dresser Casework Limited Lifetime Warranty

The Galley, LLC provides a Limited Lifetime Warranty to the original owners of the installed Galley Dresser, (the “Product”), and warrants its Product when purchased through an Authorized Galley Dresser Dealer to be free from defects in material or workmanship under normal residential use for as long as it is owned by the original purchaser, (the “Purchaser”), in the Product’s originally installed location. This warranty is not transferable to subsequent owners.

The Galley, LLC’s obligation under this warranty is limited to the repair or replacement of any Products that prove defective as determined by our review and inspection. Labor charges or damage related to installation, removal, repair, or exchange, as well as any incidental and consequential damages, regardless of who performs the work, are excluded. This warranty is void if products are misused, mishandled, improperly stored, improperly installed, modified, or subjected to extreme temperatures or extreme moisture levels.

Paint finishes are uniquely different from standard wood finishes. On all wood products, expansion and contraction are typical due to changes in climate conditions. Due to this normal movement, paint finishes may develop slight separation lines, finish breaks and seam lines. With use of selected hardwoods and veneers, some grain patterns and wood characteristics, as well as seams and joints, will remain visible through the paint finish. Over time, there may be a slight color shift due to exposure to natural and artificial light or variations in color and textures caused by exposure to heat, smoke, moisture, or other natural or chemical elements such as household cleaners. These normal conditions are not considered quality defects and are not covered by this warranty. Acts of God and normal wear and tear are also excluded.

2. Galley Dresser Hardware Limited Lifetime Warranty

Interior Hardware — The interior hardware used by The Galley Dresser in manufacturing its products is warranted by their manufacturer. This warranty is being passed on to the original buyer, subject to the same exclusions stated in the previous paragraphs. This includes the hinges and the drawer glides.

Exterior Hardware — Limited Finish Warranty: The Galley warrants the finish shall be free from defects in material and workmanship from tarnishing, flaking, and discoloring for either a) three (3) years from date of purchase for interior use, or b) one (1) year from the date of purchase for exterior use; as long as the original Purchaser occupies the residential premises upon which the product was originally installed.

Note: Frequency of use will cause the select finishes of Galley hardware to gracefully age in appearance. These finish changes are not considered manufacturing defects and are not covered by this warranty. Rather, they are indicative of normal wear and tear and reflect the essence of the finish. Due to the nature of The Galley custom hardware products and finishes, select finishes will wear over time and may already have begun the process before reaching your home. These finishes include Unlacquered Brass, Satin Brass, and Polished Antique Sterling Silver.

The Galley Dresser reserves the right to change design specifications and materials without obligation to make similar changes to previously manufactured products. If a warranty claim is filed for a product that is no longer manufactured by The Galley, The Galley reserves the right to fulfill the warranty obligation by substituting discontinued product with the most similar styling, wood species and color available at the time a claim is submitted.

3. Galley Workstation Limited Lifetime Warranty

Seller provides a Limited Lifetime Warranty. Seller warrants its stainless steel sink, installed in a residential application, to be free from manufacturing defects in materials and workmanship under normal residential usage. This Limited Lifetime Warranty is subject to the warranty conditions and limitations as set forth below.

4. Galley Tap Limited Lifetime Finish Warranty

Seller provides a Limited Lifetime Finish Warranty. For the following Finishes: Polished Stainless Steel, Matte Stainless Steel, PVD Satin Black Stainless Steel, PVD Gun Metal Gray™ Stainless Steel, PVD Polished Rose Gold Stainless Steel and PVD Brushed Gold Stainless Steel, seller warrants its finishes, installed in a residential application, to be free from manufacturing defects in materials or workmanship for the useful life of the product. Please refer to the Seller’s Care Instructions for the proper maintenance of Seller’s finishes. This Limited Lifetime Finish Warranty is subject to the warranty conditions and limitations as set forth below.

Limited Lifetime Warranty

5. Culinary Tools Components

Culinary Tools Components — The Culinary Tool Components, (Cutting Boards, Bowls, Colanders, Platforms, Drying Racks, and all other Tools), are not warranted. If a defect is found in normal residential use, Seller will, at its election, repair, replace or make appropriate adjustment. Bamboo Culinary Tool materials are not recommended for prolonged exposure to direct sunlight. These warranties are the exclusive warranties of The Galley Dresser and are in lieu of all other warranties, expressed or implied, including the implied warranties of merchantability and fitness for a particular use. In no event shall The Galley, LLC be liable for incidental and or consequential damages.

6. Care and Maintenance

Finishes — For simple cleaning and to insure the proper maintenance of the exterior of the Dresser, (the finish), we recommend using a gloss-optimized formula, such as 3M 05990 Hand Glaze. Apply the glaze to a microfiber cloth and buff the exterior area in a circular motion with medium pressure. Wipe off the excess glaze with a clean cloth.

Hardware — The process of caring for most of the Dresser Hardware is simple. For all finishes, simply use a damp cloth for general cleaning. To achieve a natural patina on the Unlacquered Brass, Satin Brass, and Polished Antique Sterling Silver finishes, use only a damp cloth. To maintain the original condition and reduce the natural patina process for the Brass finishes, use a Brass polish once a month. To maintain the original condition and reduce the natural patina process for Polished Antique Sterling Silver use Haggerty Silver polish or spray (with gloves) 3-4 times per year. Once complete, make sure to wipe the hardware with a clean cloth to remove any excess.

Workstations & Tap — For care and maintenance instructions of all Galley products, please refer to the Use and Care section on thegalley.com.

7. Warranty Claims

Warranty Claims — This warranty gives you specific legal rights which may vary from state to state, province to province or country to country. All decisions regarding the existence of manufacturing defects affecting this warranty shall be made by The Galley LLC and shall be final and binding on the parties. A dated receipt as proof of purchase is required to obtain benefits from this warranty. These warranties are in effect for Seller's Products purchased on January 1st, 2017 and thereafter. To obtain performance under this Limited Lifetime Warranty, contact the Authorized Galley Dealer where the Product was originally purchased and allow sufficient time and opportunity to inspect the Product or you may write to:

The Galley, LLC.
Attn: Galley Dresser Warranty Claims
12626 South Memorial Drive
Bixby, OK 74008

Please include the original receipt with a description of the problem, model number, store, date of purchase, your name, address and telephone number.

THE **GALLEY** DRESSER.