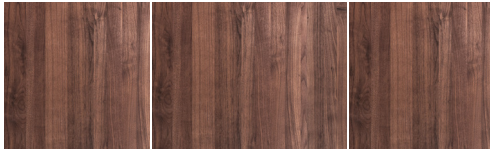


# 5' Upper Deck® Set

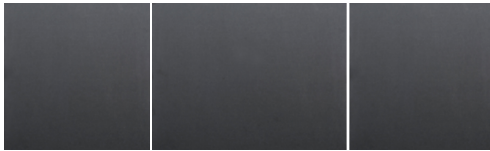
For IWS-5-S and IWW-5-D

## UD-5-3P-WA



18" 24" 18"  
American Black Walnut

## UD-5-3P-GT



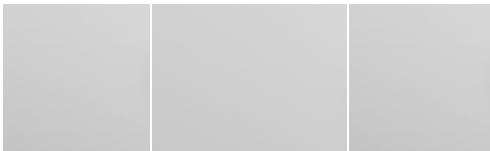
18" 24" 18"  
Graphite Wood Composite

## UD-5-3P-BA



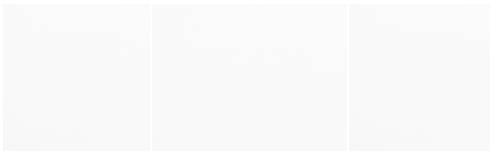
18" 24" 18"  
Natural Golden Bamboo

## UD-5-3P-GR



18" 24" 18"  
Exclusive Gray Resin

## UD-5-3P-WH



18" 24" 18"  
Designer White Resin

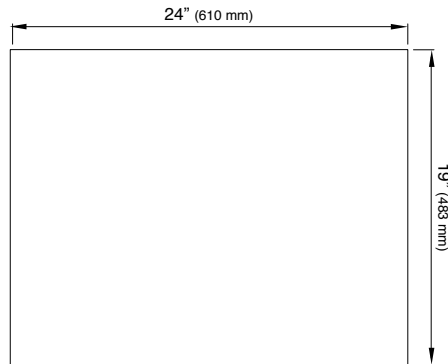
## Specifications

- 5' Upper Deck set
- (1) 24" section, (2) 18" sections
- 19" deep
- Cover system and third tier work surface
- Sits in 18" deep
- Requires 1/4" clearance below countertop surface\*

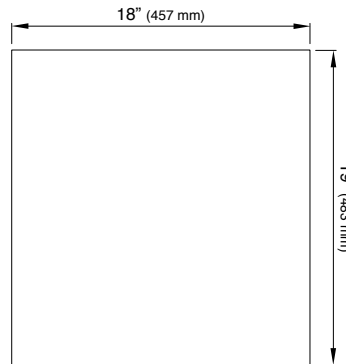
## Material Thickness

- American Black Walnut: 3/4" (sits above countertop 1/2")
- Graphite Wood Composite: 1/2" (sits above countertop 1/4")
- Natural Golden Bamboo: 3/4" (sits above countertop 1/2")
- Exclusive Gray Resin: 5/8" (sits above countertop 3/8")
- Designer White Resin: 5/8" (sits above countertop 3/8")

## Technical Drawing



(1) 24" Upper Deck Section



(2) 18" Upper Deck Sections

\*The Upper Deck requires a 1/4" clearance below the surface of the countertop. If the countertop thickness is 3/4" or less, Walnut or Bamboo Upper Deck sections will not have the clearance to function above the Upper Tier Culinary Tools.