

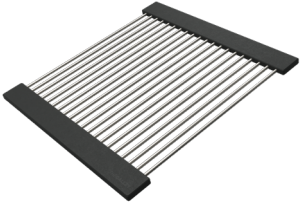
# Dual Tier Drying Rack

## DR-17-D-WA



American Black Walnut

## DR-17-D-GT



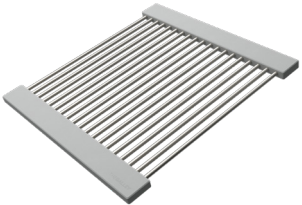
Graphite Wood Composite

## DR-17-D-BA



Natural Golden Bamboo

## DR-17-D-GR



Exclusive Gray Resin

## DR-17-D-WH



Designer White Resin

## Specifications

Stainless Steel rods\*  
Height adjustable  
17" x 18"

\*Stainless Steel rod diameter:  
BA: 3/8", GT: 1/4", GR & WH: 5/16"

## Material Thickness

American Black Walnut: 3/4"  
Graphite Wood Composite: 1/2"  
Natural Golden Bamboo: 3/4"  
Exclusive Gray Resin: 5/8"  
Designer White Resin: 5/8"

## Technical Drawing

