

# Ideal Work&WashStation™ 6D

## SPECIFICATIONS

**THEGALLEY®**  
REINVENT YOUR KITCHEN

### IWW-6-D-BA



Natural Golden Bamboo / Exclusive Gray Resin

### IWW-6-D-GT



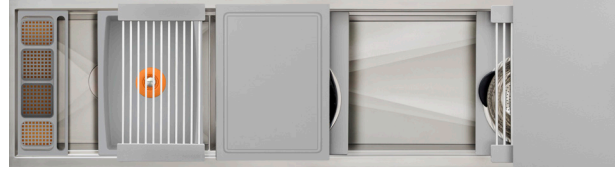
Graphite Wood Composite / Graphite Resin

### IWW-6-D-WH



Designer White Resin\*

### IWW-6-D-GR



Exclusive Gray Resin\*

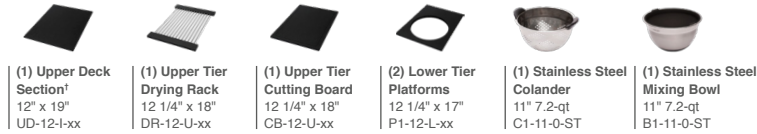
## Specifications

Double bowl  
Users: 1-2  
Culinary/Wash Tools included: Nine  
Galley Taps recommended: Two  
Outside dimensions: 69 1/2" x 19 1/2" x 10 5/16"  
Countertop cutout: 68 1/2" x 18"  
Basin area: 45 7/8", 21 7/8" x 16"  
Minimum cabinet size: 72" or 180cm

## Basin (KSO-6-D-SS)

16GA 316L stainless steel indoor/outdoor  
SilentArmor™ sound reduction technology  
Angel finish  
Two tier design  
Star™ groove pattern  
Reversible side drain  
Drain covers included  
Limited Lifetime Warranty  
Made in the USA  
ASME A112.19.3/CSA B45.4 certified  
cUPC™ certified

## Culinary Tools included (CKT-12)



## Wash Tools included (WKT-4T)



### Personalize Your IWW-6-D

Add 7-12" length  
Add 1-6" length  
Add 18" DryDock  
Add 12" DryDock  
Apron front  
9" height  
Center drain  
Galley Tap collection  
Optional Culinary Tools  
\*Color coded labels available

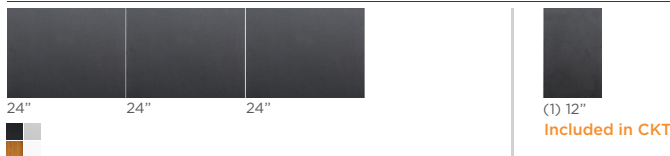
\* The Upper Deck requires a 1/4" clearance below the surface of the countertop. If the countertop thickness is 2cm or less, Bamboo Upper Deck sections will not have the needed clearance to function above the Upper Tier Culinary Tools.

Please refer to Culinary Kit Finish descriptions for planning.

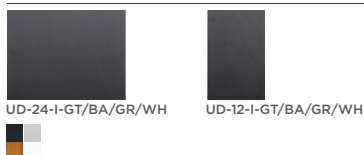
Custom options are available for countertops that are 1/2" or less in thickness.

## Upper Deck\*

Upper Deck cover set UD-6-3P-GT/BA/GR/WH Graphite, Bamboo, Gray or White Resin

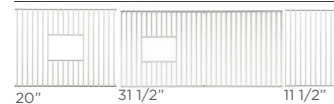


Upper Deck sections Graphite, Bamboo, Gray or White Resin



## Recommended Basin Accessories

Bottom Grate set BG-6-D-3-SS Stainless Steel



Manual Strainer Basket  
M-DRN-MSS Angel Finish 304 Stainless Steel



Disposal Flange Strainer Basket  
G-DRN-MSS Angel Finish 304 Stainless Steel



Auto Strainer Basket Angel Finish 304 Stainless Steel with Polished or Matte knob

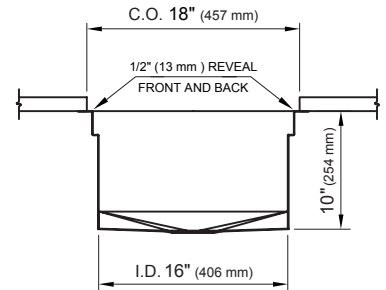


A-DRN-PSS  
A-DRN-MSS

**THEGALLEY®**  
■ ■ ■ ■ REINVENT YOUR KITCHEN

Technical drawing of a rectangular cutout with a decorative border and internal structural details. The drawing includes the following dimensions and features:

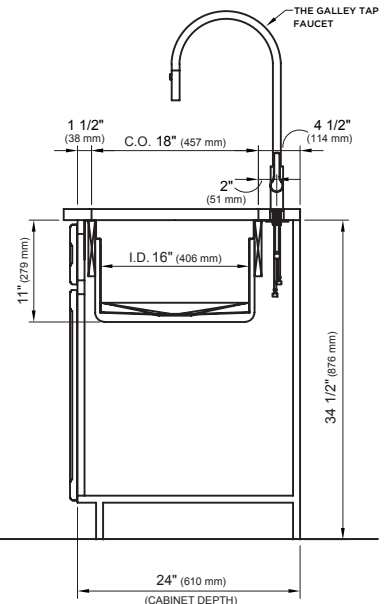
- Outside Dimension:** 69 1/2"
- Cutout Dimension:** 68 1/2"
- Inside Dimension:** 68"
- Top and Bottom Flange Thickness:** 1 1/4" (32 mm)
- Left and Right Flange Thickness:** 3/4" (19 mm)
- Internal Width Segments:** 23 3/16", 34 1/8", and 11 3/16"
- Internal Height Segments:** 8" and 8"
- Internal Width Segments (Bottom):** 8 15/16" and 10 15/16"
- Right Side Flange Thickness:** 3/4" (19 mm)
- Right Side Flange Height:** 18"
- Right Side Flange Total Height:** 19 1/2"
- Internal Features:** Two circular holes with a cross symbol inside, and a central vertical line.



**Note:** Tap Placements are for right hand or left hand drain orientation

Technical drawing of a cabinet bulkhead showing dimensions and assembly details. The drawing includes the following labels and dimensions:

- C.O. 68 1/2" (1740 mm)**: Overall width dimension at the top.
- 1/4" (6 mm) REVEAL LEFT AND RIGHT**: Dimension for the reveal on the left and right sides.
- I.D. 45 7/8" (1165 mm)**: Internal diameter dimension on the left side.
- I.D. 21 7/8" (556 mm)**: Internal diameter dimension on the right side.
- 10" (254 mm)**: Vertical dimension on the right side.
- 1/4" (6 mm) DIVIDER**: Dimension for the divider between the two main sections.
- CABINETS ARE TYPICALLY CUSTOM MADE FOR GALLEY DIMENSIONS. FOR EXISTING CABINETS, TRIM INTERIOR BULKHEADS APPROX. 11" (280 mm) TO CLEAR SINK DEPTH.**: Text describing the custom nature of the cabinets and the required clearance for existing cabinets.
- 72" (1829 mm)**: Overall width dimension at the bottom, labeled **(CABINET LENGTH)**.



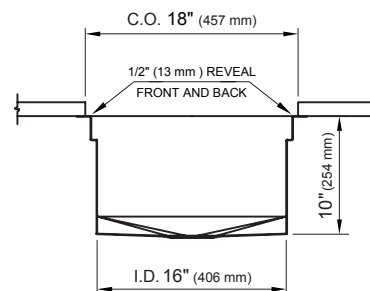
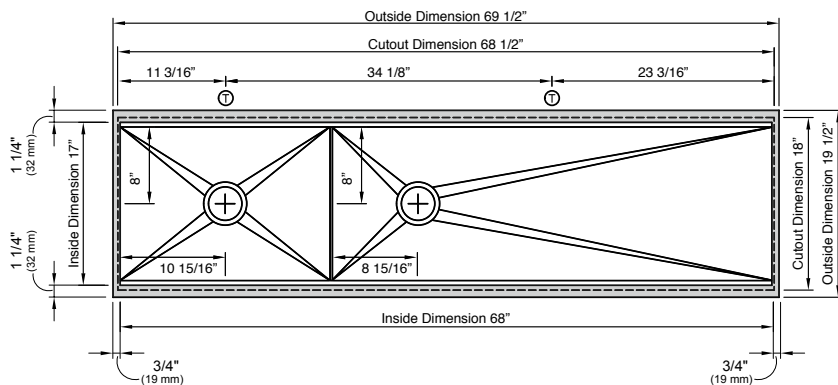
*Questions? For additional assistance, please contact  
The Galley's Customer Service Department at 800.375.4255*

# Ideal Work&WashStation™ 6D

## SPECIFICATIONS | Left Hand Drain Orientation

**THEGALLEY**  
REINVENT YOUR KITCHEN

### Tap Hole Specifications



#### SUGGESTED GALLEY TAP PLACEMENT GUIDE

Suggested maximum inside corner radius of countertop cutout 3/8"

① Galley Tap 1 3/8" min to 1 1/2" max hole diameter

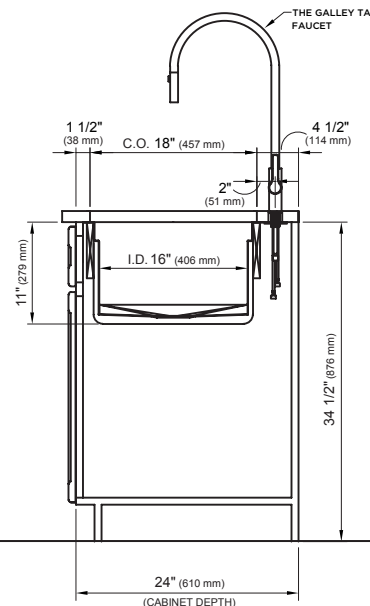
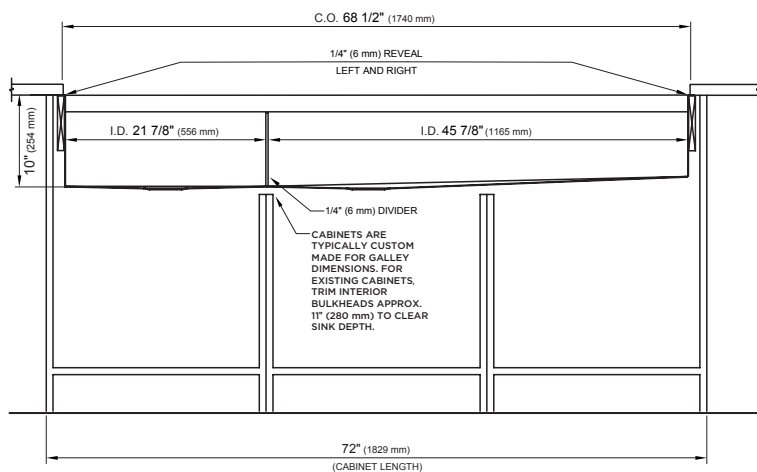
Center Tap hole diameters 2" behind cutout

**Note:** Galley Hot & Cold Tap requires a minimum 8" clearance to center if installed to the right of the Galley Tap

**Note:** Tap Placements are for right hand or left hand drain orientation

Call 800.375.4255 or email [customerservice@thegalley.com](mailto:customerservice@thegalley.com) for additional guidance on Tap and Tap Accessory placements

### Countertop Cutout Plan



STAINLESS STEEL COMPLIANCE ASME A112. 19.3-2008/CSA B45.4-08

WE RESERVE THE RIGHT TO MAKE REVISIONS WITHOUT NOTICE IN THE DESIGN OF PRODUCTS OR IN PACKAGING UNLESS THIS RIGHT HAS SPECIFICALLY BEEN WAIVED AT THE TIME THE ORDER IS ACCEPTED.

DWG and DXF templates available on our website:

[TheGalley.com/specification-library](http://TheGalley.com/specification-library)

Questions? For additional assistance, please contact  
The Galley's Customer Service Department at 800.375.4255