

# Ideal Work&WashStation™ 4D

## SPECIFICATIONS

**THEGALLEY®**  
REINVENT YOUR KITCHEN

### IWW-4-D-BA



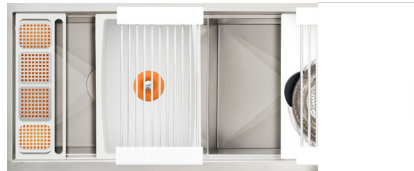
Natural Golden Bamboo / Exclusive Gray Resin

### IWW-4-D-GT



Graphite Wood Composite / Graphite Resin

### IWW-4-D-WH



Designer White Resin\*

### IWW-4-D-GR



Exclusive Gray Resin\*

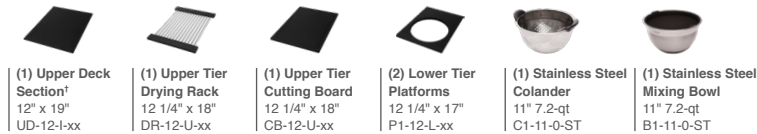
## Specifications

Double bowl  
Users: 1  
Culinary/Wash Tools included: Nine  
Galley Tap recommended: One  
Outside dimensions: 45 1/2" x 19 1/2" x 10 5/16"  
Countertop cutout: 44 1/2" x 18"  
Basin area: 21 7/8", 21 7/8" x 16"  
Minimum cabinet size: 48" or 120cm

## Basin (KSO-4-D-SS)

16GA 316L stainless steel indoor/outdoor  
SilentArmor™ sound reduction technology  
Angel finish  
Two tier design  
Star™ groove pattern  
Center drains  
Drain covers included  
Limited Lifetime Warranty  
Made in the USA  
ASME A112.19.3/CSA B45.4 certified  
cUPC™ certified

## Culinary Tools included (CKT-12)



## Wash Tools included (WKT-4T)



### Personalize Your IWW-4-D

Add 7-12" length  
Add 1-6" length  
Add 18" DryDock  
Add 12" DryDock  
Apron front  
9" height  
Galley Tap collection  
Optional Culinary Tools  
\*Color coded labels available

\* The Upper Deck requires a 1/4" clearance below the surface of the countertop. If the countertop thickness is 2cm or less, Bamboo Upper Deck sections will not have the needed clearance to function above the Upper Tier Culinary Tools.

Please refer to Culinary Kit Finish descriptions for planning.

Custom options are available for countertops that are 1/2" or less in thickness.

## Upper Deck®

Upper Deck cover set **UD-4-2P-GT/BA/GR/WH** Graphite, Bamboo, Gray or White Resin

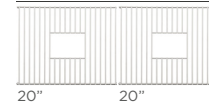


Upper Deck sections Graphite, Bamboo, Gray or White Resin



## Recommended Basin Accessories

Bottom Grate set **BG-4-D-2-SS** Stainless Steel



Manual Strainer Basket  
**M-DRN-MSS** Angel Finish 304 Stainless Steel



Disposal Flange Strainer Basket  
**G-DRN-MSS** Angel Finish 304 Stainless Steel



Auto Strainer Basket Angel Finish 304 Stainless Steel with Polished or Matte knob



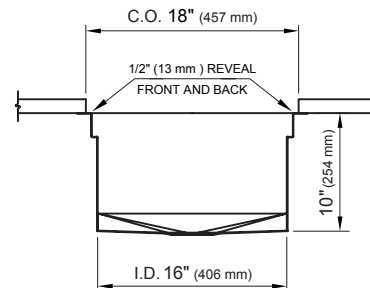
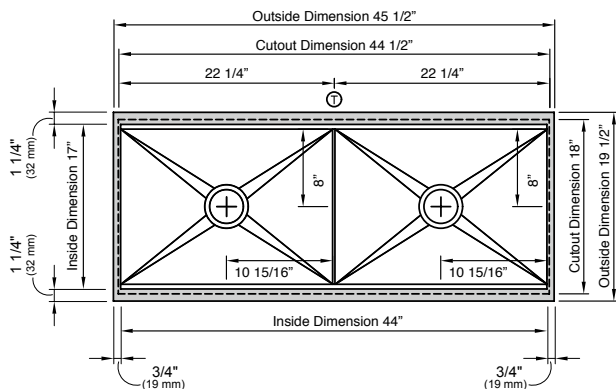
**A-DRN-PSS**  
**A-DRN-MSS**

# Ideal Work&WashStation™ 4D

## SPECIFICATIONS

**THEGALLEY®**  
REINVENT YOUR KITCHEN

### Tap Hole Specifications



#### SUGGESTED GALLEY TAP PLACEMENT GUIDE

Suggested maximum inside corner radius of countertop cutout 3/8"

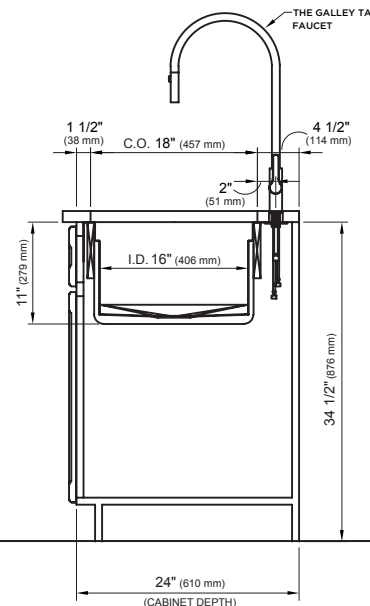
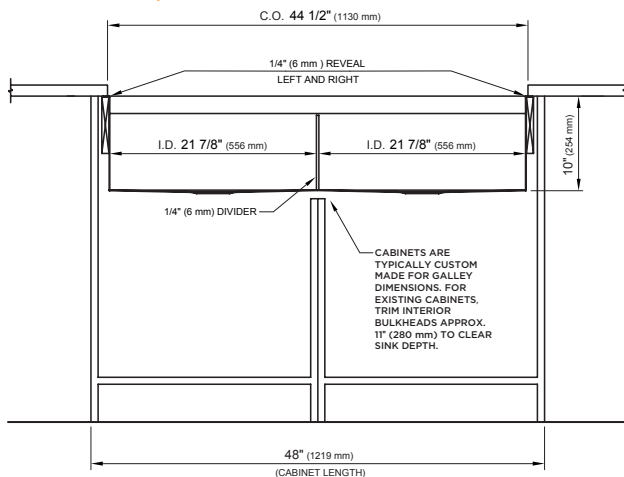
① Galley Tap 1 3/8" min to 1 1/2" max hole diameter

Center Tap hole diameters 2" behind cutout

**Note:** Galley Hot & Cold Tap requires a minimum 8" clearance to center if installed to the right of the Galley Tap

Call 800.375.4255 or email [customerservice@thegalley.com](mailto:customerservice@thegalley.com) for additional guidance on Tap and Tap Accessory placements

### Countertop Cutout Plan



STAINLESS STEEL COMPLIANCE ASME A112. 19.3-2008/CSA B45.4-08

WE RESERVE THE RIGHT TO MAKE REVISIONS WITHOUT NOTICE IN THE DESIGN OF PRODUCTS OR IN PACKAGING UNLESS THIS RIGHT HAS SPECIFICALLY BEEN WAIVED AT THE TIME THE ORDER IS ACCEPTED.

DWG and DXF templates available on our website:

[TheGalley.com/specification-library](http://TheGalley.com/specification-library)

Questions? For additional assistance, please contact  
The Galley's Customer Service Department at 800.375.4255