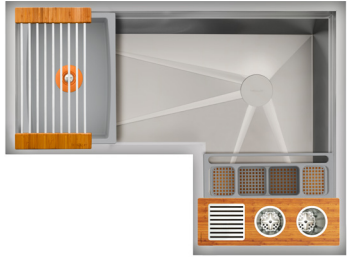


# Ideal WashStation™ 4X3C

## SPECIFICATIONS

IWA-4X3-C-BA



Golden Bamboo / Gray Resin

IWA-4X3-C-GT



Graphite Wood / Graphite Resin

IWA-4X3-C-GR



Exclusive Gray Resin\*

IWA-4X3-C-WH



Designer White Resin\*

## Specifications

Single bowl  
Users: 2 (Outside Corner), 1 (Inside Corner)  
Wash Tools included: Four  
Galley Tap recommended: One  
Outside dimensions: 44" x 32" x 19 1/2" x 10 5/16"  
Countertop cutout: 42 3/4" x 30 3/4" x 18"  
Basin area: 42" x 30" x 16"  
Min. cabinet size: 48" x 36" or 120cm x 90cm

## Wash Tools included (WKT-4T)



(1) Upper Tier  
Drying Rack  
9 1/4" x 18"  
DR-09-U-xx



(1) Lower Tier  
Wash Caddy  
6" x 17"  
WC-06-L-xx



(1) Lower Tier  
Wash Bowl  
12" x 17"  
WB-12-L-xx



(1) Upper Tier  
Utensil Caddy  
6" x 18"  
UC-06-U-xx

## Basin (KSO-4X3-C-SS)

16GA 316L stainless steel indoor/outdoor  
SilentArmor™ sound reduction technology  
Angel finish  
Two tier design  
Star™ groove pattern  
Side drain  
Drain cover included  
Limited Lifetime Warranty  
Made in the USA  
ASME A112.19.3/CSA B45.4 certified  
cUPC™ certified

### Personalize Your IWA-4X3-C

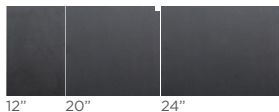
Add 7-12" length  
Add 1-6" length  
Add 18" DryDock

Add 12" DryDock  
9" height

Galley Tap collection  
Optional Culinary Tools  
\*Color coded labels available

## Upper Deck

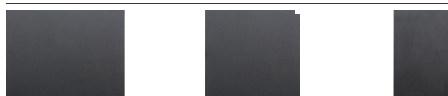
Upper Deck cover set **UD-4X3-3P-GT/BA/GR/WH** Graphite, Bamboo, Gray or White Resin



12" 20" 24"



Upper Deck sections Graphite, Bamboo, Gray or White Resin



UD-24-I-GT/BA/GR/WH

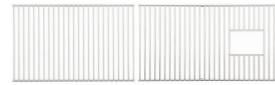
UD-20-C-I-GT/BA/GR/WH

UD-12-I-GT/BA/GR/WH



## Recommended Basin Accessories

Bottom Grate set **BG-4X3-C-2-SS** Stainless Steel



25 1/2"

29"

Manual Strainer Basket

**M-DRN-MSS** Angel Finish 304 Stainless Steel



Disposal Flange Strainer Basket

**G-DRN-MSS** Angel Finish 304 Stainless Steel



Auto Strainer Basket Angel Finish 304 Stainless Steel with Polished or Matte knob



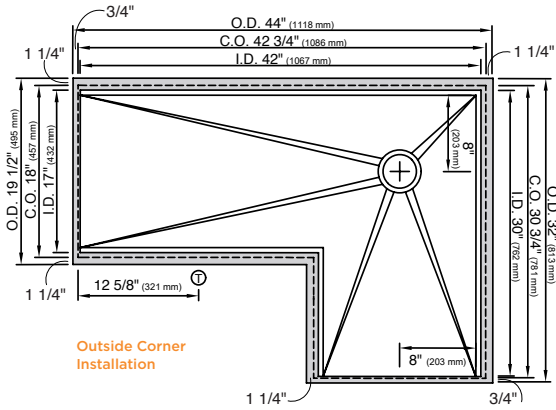
A-DRN-MSS shown

A-DRN-PSS  
A-DRN-MSS

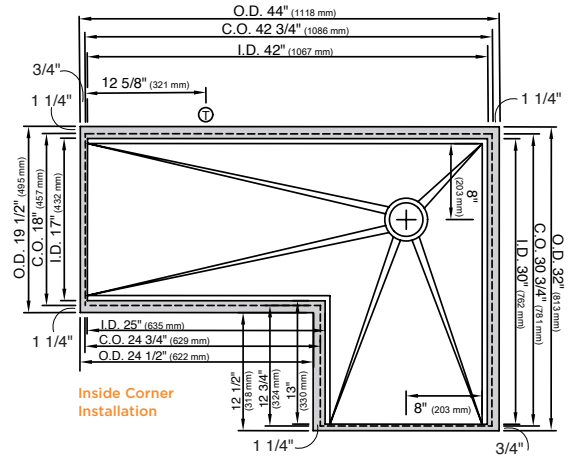
# Ideal WashStation™ 4X3C

## SPECIFICATIONS

### Tap Hole Specifications



Outside Corner Installation



Inside Corner Installation

#### SUGGESTED GALLEY TAP PLACEMENT GUIDE

Suggested maximum inside corner radius of countertop cutout 3/8"

Ⓢ Galley Tap 1 3/8" min to 1 1/2" max hole diameter

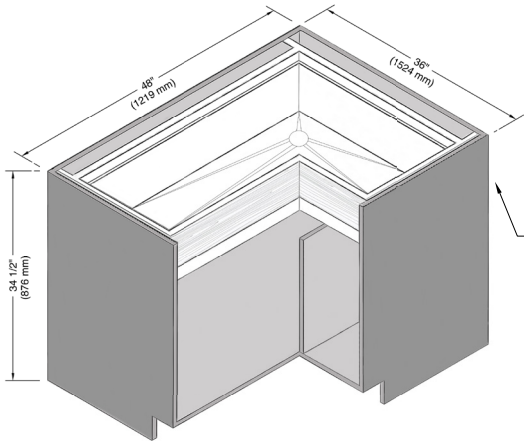
Center Tap hole diameters 2" behind cutout

**Note:** Galley Hot & Cold Tap requires a minimum 8" clearance to center if installed to the right of the Galley Tap

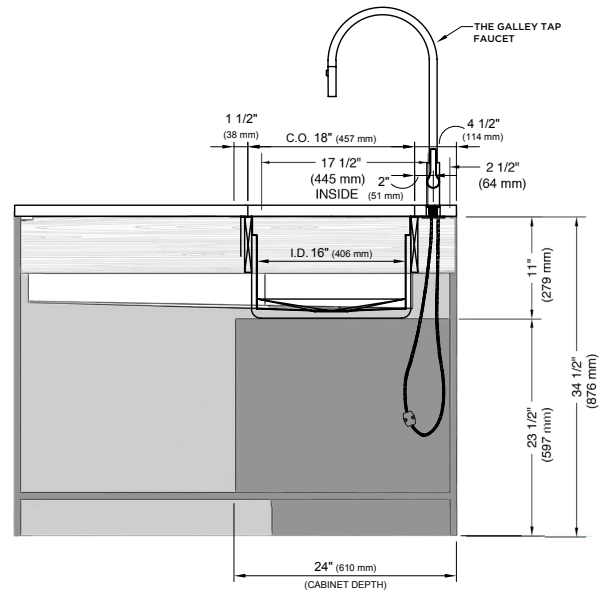
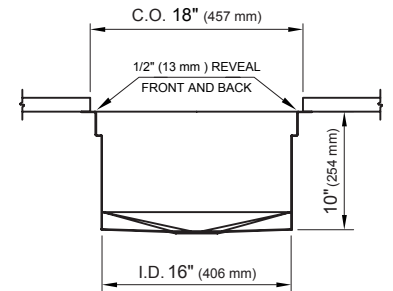
**Note:** For inner corner dimensions (O.D., C.O., I.D.) on Outside Corners, look to Inside Corner drawings

Call 800.375.4255 or email [customerservice@thegalley.com](mailto:customerservice@thegalley.com) for additional guidance on Tap and Tap Accessory placements

### Countertop Cutout Plan



CABINETS ARE TYPICALLY CUSTOM MADE FOR GALLEY DIMENSIONS. FOR EXISTING CABINETS, TRIM INTERIOR BULKHEADS APPROX. 1" (25.4 mm) TO CLEAR SINK DEPTH.



STAINLESS STEEL COMPLIANCE ASME A112. 19.3-2008/CSA B45.4-08

WE RESERVE THE RIGHT TO MAKE REVISIONS WITHOUT NOTICE IN THE DESIGN OF PRODUCTS OR IN PACKAGING UNLESS THIS RIGHT HAS SPECIFICALLY BEEN WAIVED AT THE TIME THE ORDER IS ACCEPTED.

DWG and DXF templates available on our website:

[TheGalley.com/specification-library](http://TheGalley.com/specification-library)

Questions? For additional assistance, please contact The Galley's Customer Service Department at 800.375.4255