

Ideal Workstation® 4S + DryDock™ 18

IWS-4-S-DD-18-S-BA



Natural Golden Bamboo

IWS-4-S-DD-18-S-GT



Graphite Wood Composite

IWS-4-S-DD-18-S-WH



Designer White Resin*

IWS-4-S-DD-18-S-GR



Exclusive Gray Resin*

Specifications

Single bowl
Users: 1
Culinary Tools included: Five
DryDock Tool included: One
Galley Tap recommended: One
Outside dimensions: 63 1/2" x 19 1/2" x 2 1/16"
Countertop cutout: 62 1/2" x 18"
Minimum cabinet size: 66" or 165cm
Minimum clearance required for DryDock below countertop: 2"
DryDock location: Drain side (S)

Basin (KSO-4-S-DS-18-S-SS)

16GA 316L stainless steel indoor/outdoor
SilentArmor™ sound reduction technology
Angel finish
Two tier design
Star™ groove pattern
Reversible side drain
Drain cover included
Limited Lifetime Warranty
Made in the USA
ASME A112.19.3/CSA B45.4 certified

† The Upper Deck requires a 1/4" clearance below the surface of the countertop. If the countertop thickness is 2cm or less, Bamboo Upper Deck sections will not have the needed clearance to function above the Upper Tier Culinary Tools. Please refer to Culinary Kit Finish descriptions for planning. Custom options are available for countertops that are 1/2" or less in thickness.

Culinary Tools included (CKT-12)



(1) Upper Deck Section†
12" x 19"
UD-12-I-xx



(1) Upper Tier Drying Rack
12 1/4" x 18"
DR-12-U-xx



(1) Upper Tier Cutting Board
12 1/4" x 18"
CB-12-U-xx



(2) Lower Tier Platforms
12 1/4" x 17"
P1-12-L-xx



(1) Stainless Steel Colander
11" 7.2-qt
C1-11-0-ST



(1) Stainless Steel Mixing Bowl
11" 7.2-qt
B1-11-0-ST



(1) Dual Tier Drying Rack
18" x 17"
DR-18-D-xx

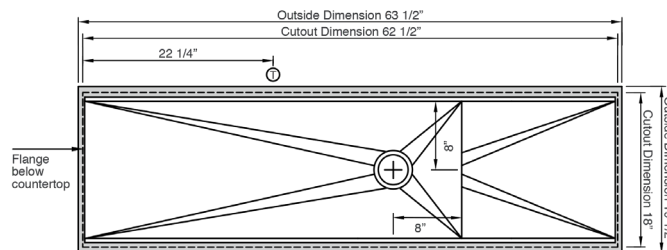
DryDock Tool included (DR-18)

Personalize Your IWS-4-S-DD-18-S

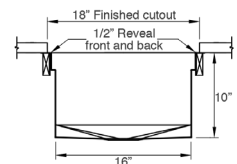
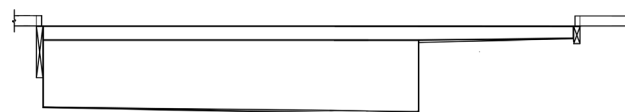
Add 7-12" length
Add 1-6" length
Add 18" DryDock
Add 12" DryDock Apron front
9" depth
Center drain

Galley Tap collection
Optional Culinary Tools

*Color coded labels available

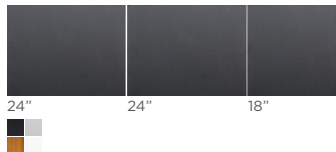


Important Installation Note: DryDock requires 2" minimum clearance below countertop

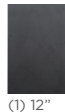


Upper Deck™

Upper Deck cover set UD-4-18-3P-GT/BA/GR/WH Graphite, Bamboo, Gray or White Resin

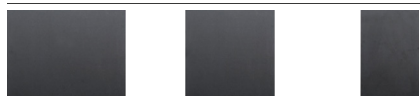


24" 24" 18"



(1) 12"
Included in CKT

Upper Deck sections Graphite, Bamboo, Gray or White Resin



UD-24-I-GT/BA/GR/WH UD-18-I-GT/BA/GR/WH UD-12-I-GT/BA/GR/WH

Recommended Basin Accessories

Bottom Grate set BG-4-S-2-SS Stainless Steel



11 1/2" 31 1/2"

Manual Strainer Basket
M-DRN-MSS Angel Finish 304 Stainless Steel



Disposal Flange Strainer Basket
G-DRN-MSS Angel Finish 304 Stainless Steel



Auto Strainer Basket Angel Finish 304 Stainless Steel with Polished or Matte knob



A-DRN-PSS
A-DRN-MSS